

Design and Performance Analysis of Mobility Management Schemes based on Pointer Forwarding for Wireless Mesh Networks

Yinan Li, Ing-Ray Chen, *Member, IEEE*

Abstract—We propose efficient mobility management schemes based on pointer forwarding for wireless mesh networks (WMNs) with the objective to reduce the overall network traffic incurred by mobility management and packet delivery. The proposed schemes are per-user based, i.e., the optimal threshold of the forwarding chain length that minimizes the overall network traffic is dynamically determined for each individual mobile user, based on the user's specific mobility and service patterns. We develop analytical models based on stochastic Petri nets to evaluate the performance of the proposed schemes. We demonstrate that there exists an optimal threshold of the forwarding chain length, given a set of parameters characterizing the specific mobility and service patterns of a mobile user. We also demonstrate that our schemes yield significantly better performance than schemes that apply a static threshold to all mobile users. A comparative analysis shows that our pointer forwarding schemes outperform routing-based mobility management protocols for WMNs, especially for mobile Internet applications characterized by large traffic asymmetry for which the downlink packet arrival rate is much higher than the uplink packet arrival rate.

Index Terms—Mobility management, pointer forwarding, wireless mesh networks, performance analysis, stochastic Petri net.



1 INTRODUCTION

WIRELESS Mesh Networks (WMNs) are gaining rapidly growing interest in recent years, and are widely acknowledged as an innovative solution for next-generation wireless networks with wide coverage. Compared with traditional wireless and mobile networks, e.g., Wi-Fi based wireless networks and mobile IP networks, WMNs have the advantages of low cost, easy deployment, self organization and self healing, and compatibility with existing wired and wireless networks through the gateway/bridge function of mesh routers. A WMN consists of mesh routers and mesh clients [1]. Mesh routers are similar to ordinary routers in wired IP networks, except that they are connected via (possibly multi-channel multi-radio) wireless links. Mesh clients are wireless mobile devices, e.g., PDAs, smart phones, laptops, etc.

A major expected use of WMNs is as a wireless backbone for providing last-mile broadband Internet access [2] to mesh clients in a multi-hop way, through the gateway that is connected to the Internet. Because mesh clients may move within a WMN and change their points of attachment frequently, mobility management is a necessity for WMNs to function appropriately. Mobility management consists of location management and hand-off management [3]. Location management keeps track

of the location information of mesh clients, through location registration and location update operations. Hand-off management maintains ongoing connections of mesh clients while they are moving around and changing their points of attachment.

Mobility management has been studied intensively for cellular networks and mobile IP networks. A large variety of mobility management schemes and protocols have been proposed for those types of networks over the past years. Comprehensive surveys of mobility management in cellular networks and mobile IP networks can be found in [3] and [4], respectively. Although the number of existing schemes and protocols is large, due to some significant differences in network architecture, mobility management schemes proposed for cellular networks and mobile IP networks are generally not appropriate for WMNs. For example, the lack of centralized management facilities, e.g., HLR/VLR in cellular networks, and HA/FA in mobile IP networks, makes a large portion of the schemes proposed for those types of networks not directly applicable to WMNs, as argued in [1]. Therefore, the development of new mobility management schemes, which take into consideration of the unique characteristics of WMNs, is interesting and important. Additionally, mobility management schemes that are on a per-user basis are highly desired. A per-user based mobility management scheme can apply specific optimal settings to individual mobile users such that the overall network traffic incurred by mobility management and packet forwarding is minimized. The optimal settings of each mobile user should depend on the user's specific mobility and service patterns, and should be computa-

• *Yinan Li and Ing-Ray Chen are with the Department of Computer Science, Virginia Polytechnic Institute and State University, Falls Church, VA, 22043.
E-mail: yinan926@vt.edu and irchen@cs.vt.edu.*

tionally easy to determine.

In this paper, we develop two per-user based mobility management schemes for WMNs, namely the *static anchor* scheme and *dynamic anchor* scheme, respectively. Both schemes are based on pointer forwarding, i.e., a chain of forwarding pointers is used to track the current location of a mesh client. The optimal threshold of the forwarding chain length is determined for each individual mesh client dynamically based on the mesh client's specific mobility and service patterns.

We develop analytical models based on stochastic Petri nets to evaluate the performance of the proposed schemes. Using the stochastic Petri net models, we demonstrate that for both schemes, there exists an optimal threshold of the forwarding chain length that minimizes the overall network traffic incurred by mobility management and packet forwarding, when given a set of parameters characterizing the specific mobility and service patterns of a mesh client. We show that our schemes can yield significantly better performance than schemes that apply a static threshold to all mesh clients, especially when a mesh client's mobility rate is relatively high compared to its service rate. Between the two proposed schemes, we show that the dynamic anchor scheme is better in typical network traffic conditions, whereas the static anchor scheme is better when the service rate of a mesh client is considerably high such that the advantage of the dynamic anchor scheme is offset by the extra cost.

We also carry out a comparative performance analysis to compare our schemes with a representative routing-based mobility management scheme named Wireless mesh Mobility Management (WMM) [5]. To study the performance of the WMM scheme, we develop an analytical model that is also based on stochastic Petri nets for the WMM scheme. The comparative performance analysis shows that our schemes outperform the WMM scheme, especially when the network traffic is dominated by mobile Internet applications characterized by large traffic asymmetry, i.e., the traffic load on the downlink is much larger than that on the uplink.

The rest of this paper is organized as follows. Section 2 surveys existing mobility management schemes proposed for WMNs and contrasts our work with existing work. Section 3 describes the system model of our proposed schemes and the assumptions made in the paper. Section 4 and Section 5 introduce the static anchor scheme and dynamic anchor scheme, respectively. Performance modeling and performance analysis are carried out in Section 6 and 7, respectively. The paper concludes with Section 8.

2 RELATED WORK

Although mobility management has been studied intensively for other types of networks, e.g., cellular networks and mobile IP networks, it is relatively unexplored for WMNs. As suggested in [6], existing mobility management schemes proposed for WMNs fall into

three categories, i.e., tunneling-based, routing-based, and multicasting-based.

2.1 Tunneling-based Schemes

Ant [7] is a mobility management protocol that supports intra-domain mobility within a WMN. Although the use of MAC-layer events can help Ant speedup handoff, the signaling cost of location updates in Ant is considerably high, because a location update message has to be sent to a central location server every time a mesh client changes its point of attachment. This is especially a severe problem if the average mobility rate of mesh clients is high.

Huang et al. [8] proposed a mobility management for WMNs called M^3 , which combines per-host routing and tunneling to forward packets to mesh clients. The gateway hosts the location database and user profiles in M^3 . Like our schemes, M^3 is based on pointer forwarding. However, M^3 adopts a periodic location update approach, and the location update interval is uniform for all mesh clients. In that sense, M^3 is not a per-user based mobility management scheme, and therefore cannot guarantee optimal performance for every mesh client.

2.2 Routing-based Schemes

iMesh [9] is an infrastructure-mode 802.11-based WMN. iMesh adopts a cross-layer approach for mobility management and develops a routing-based mobility management scheme. A link layer handoff is triggered when a mesh client moves out of the covering area of its current serving mesh router. After the link-layer handoff is completed, the routing protocol used in iMesh, the Optimized Link State Routing (OLSR) protocol, broadcasts an HNA message announcing the new route of the mesh client. Mobility management in iMesh therefore incurs significant overhead due to the broadcasting of the HNA message.

Mesh networks with MObility management (MEMO) [10] is the implementation of an applied WMN with support of mobility management. MEMO uses a modified AODV routing protocol, called AODV-MEMO, for integrated routing and mobility management. Like the Ant scheme, MEMO also adopts MAC-layer triggered mobility management (MTMM). Although this cross-layer design (Layer 2 and 3) helps reducing the handoff latency, the use of flooding by mesh clients to inform correspondence nodes about location handoffs leads to high signaling cost and bandwidth consumption.

A common problem of iMesh and MEMO is that both of them are based on routing protocols proposed for mobile ad-hoc networks that rely on broadcasting for route discovery or location change notification, thus excessive signaling overhead is incurred.

WMM [5] is a novel routing-based mobility management scheme proposed for WMNs. Location cache is used in combination with routing tables in the WMM

scheme for integrated routing and location management. Because location update and location information synchronization can be done while mesh routers route packets, the WMM scheme does not incur significant signaling overhead, as in tunneling-based and multicasting-based schemes. Additionally, as discussed in Section 7.3, the WMM scheme can be virtually viewed as a variant of mobility management schemes based on pointer forwarding, since relevant operations in the WMM scheme resemble forwarding pointer setup and reset operations in pointer forwarding approaches. A detailed description of the WMM scheme can be found in Section 7.3.

2.3 Multicasting-based Schemes

SMesh [11] offers a seamless wireless mesh network system to mesh clients, in the sense that mesh clients view the system as a single access point. Fast handoff in SMesh is achieved by using a group of mesh routers to serve a mesh client and multicast traffic to the mesh client during the handoff. This incurs a high signaling cost, which is especially a severe problem when the average mobility rate of mesh clients is high. Management of multicasting groups is also a major source of signaling overhead in SMesh.

3 SYSTEM MODEL

As introduced in Section 1, a WMN consists of two types of nodes: mesh routers (MRs) and mesh clients (MCs). MRs are usually static, and form the wireless mesh backbone of WMNs. Some MRs also serve as wireless access points (WAPs) for MCs. One or more MRs are connected to the Internet and are responsible for relaying Internet traffic to and from a WMN, and such MRs are commonly referred to as gateways. In this paper, we assume that a single gateway exists in a WMN.

In the proposed mobility management schemes, the central location database resides in the gateway. For each MC roaming around in a WMN, an entry exists in the location database for storing the location information of the MC, i.e., the address of its anchor MR (AMR). The AMR of an MC is the head of its forwarding chain. With the address of an MC's AMR, the MC can be reached by following the forwarding chain. Data packets sent to an MC will be routed to its current AMR first, which then forwards them to the MC by following the forwarding chain. Packet delivery in the proposed schemes simply rely on the routing protocol used. The concept of pointer forwarding [12] comes from mobility management schemes proposed for cellular networks. The idea behind pointer forwarding is minimizing the overall network signaling cost incurred by mobility management operations by reducing the number of expensive location update events. A location update event means sending to the gateway a location update message informing it to update the location database. With pointer forwarding, a location handoff simply involves setting up a forwarding

pointer between two neighboring MRs without having to trigger a location update event.

The forwarding chain length of an MC significantly affects the network traffic cost incurred by mobility management and packet delivery, with respect to the MC. The longer the forwarding chain, the lower the rate the location update event, thus the smaller the signaling overhead. However, a long forwarding chain will increase the packet delivery cost because packets have to travel a long distance to reach the destination. Therefore, there exists a trade-off between the signaling cost incurred by mobility management vs. the service cost incurred by packet delivery. Consequently, there exists an optimal threshold of the forwarding chain length for each MC. In the proposed schemes, this optimal threshold denoted by K is determined for each individual MC dynamically, based on the MC's specific mobility and service patterns. We use a parameter named the service to mobility ratio (SMR) of each MC to depict the MC's mobility and service patterns. For an MC with an average packet arrival rate denoted by λ_p and mobility rate denoted by σ , its SMR is formally defined as $SMR = \frac{\lambda_p}{\sigma}$.

As discussed in [13], Internet traffic, i.e., the traffic between MRs and the gateway, dominates peer-to-peer traffic in WMNs because WMNs are expected to be a low-cost solution for providing last-mile broadband Internet access. Thus, we assume that for any MC, the Internet session arrival rate is higher than the Intranet session arrival rate, and the average duration of Internet sessions is longer than that of Intranet sessions. We use a parameter γ to signify the first assumption, and another parameter δ to signify the second assumption. More specifically, γ denotes the ratio of the Internet session arrival rate to the Intranet session arrival rate, and δ denotes the ratio of the average duration of Internet sessions to the average duration of Intranet sessions. In Section 6.3, we show that δ is also the ratio of the Intranet session departure rate to the Internet session departure rate, using a $M/M/\infty$ queue to model the session arrival process towards an MC.

4 STATIC ANCHOR SCHEME

The first mobility management scheme we propose for WMNs is the static anchor scheme. In the static anchor scheme, an MC's AMR remains unchanged as long as the length of the forwarding chain does not exceed the threshold K .

4.1 Location Handoff

When an MC moves across the boundary of covering areas of two neighboring MRs, it de-associates from its old serving MR and re-associates with the new MR, thus incurring a location handoff. The MR it is newly associated with becomes its current serving MR. For each MC, if the length of its current forwarding chain is less than its specific threshold K , a new forwarding pointer will be setup between the old MR and new MR during

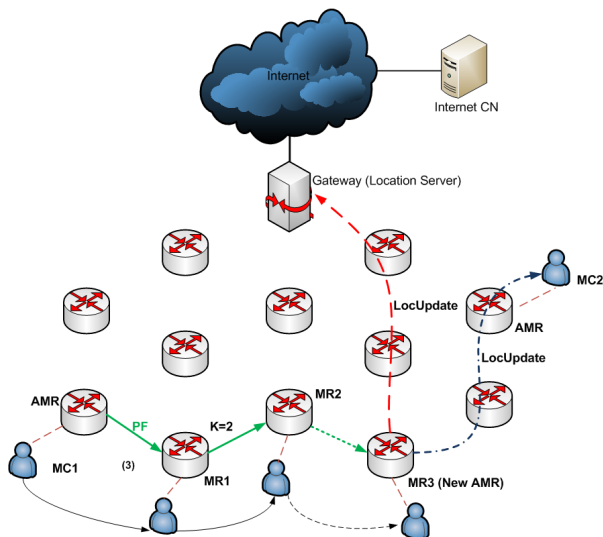


Fig. 1. The handling of location handoffs in the proposed pointer forwarding schemes (*LocUpdate* means a location update message, and *PF* means pointer forwarding).

a location handoff. On the other hand, if the length of the MC's current forwarding chain has already reached its specific threshold K , a location handoff will trigger a location update. During a location update, the gateway is informed to update the location information of the MC in the location database by a location update message. The location update message is also sent to all the active Intranet correspondence nodes of the MC. After a location update, the forwarding chain is reset and the new MR becomes the AMR of the MC. Fig. 1 illustrates the handling of location handoffs in the proposed schemes.

4.2 Service Delivery

4.2.1 Internet Session

Internet sessions initiated towards an MC always go through the gateway, i.e., they are always routed to the gateway first before they actually enter into the WMN. Because the location database resides in the gateway, the gateway always knows the location information of an MC by performing queries in the location database. Therefore, routing an Internet session towards an MC is straightforward. Once the location information of an MC is known, i.e., the address of the MC's AMR is queried, the gateway can route data packets to the AMR, which then forwards them to the MC by following the forwarding chain.

4.2.2 Intranet Session

Unlike Internet sessions, which always go through the gateway where the location database is located, an Intranet session initiated towards an MC within a WMN must first determine the location information of the destination MC through a location search procedure. Suppose a mesh client MC1 initiates an Intranet session towards another mesh client MC2. Upon receiving

the new session request from MC1, the serving MR of MC1 (MR1) sends a location query for MC2's location information to the gateway, which performs the query in the location database and replies with the location information of MC2, i.e., the address of the AMR of MC2. After the location search procedure, data packets sent from MC1 to MC2 can be routed directly to the AMR of MC2, which then forwards them to MC2 by following the forwarding chain.

5 DYNAMIC ANCHOR SCHEME

In the dynamic anchor scheme, the current forwarding chain of an MC will be reset due to the arrival of new Internet or Intranet sessions. The idea behind this scheme is to reduce the packet delivery cost by keeping the AMR of an MC close to its current serving MR when the service to mobility ratio is high, thus relieving the problem of triangular routing (gateway-AMR-MC) of the static anchor scheme, with the extra cost of resetting the forwarding chain upon a new session arrival.

The handling of location handoffs in the dynamic anchor scheme is the same as in the static anchor scheme shown in Fig. 1. However, the mechanism of service delivery in the dynamic anchor scheme is significantly different from that in the static anchor scheme.

5.1 Service Delivery

5.1.1 Internet Session

In the dynamic anchor scheme, when a new Internet session towards an MC arrives at the gateway, the gateway will not route the session to the AMR of the MC immediately. Instead, a location search procedure is executed to locate the MC's current serving MR, which may be different from its AMR. Fig. 2 illustrates the location search procedure for newly arrived Internet sessions. Specifically, the gateway sends a location request message to the AMR of the MC, which forwards the location request to its current serving MR. Upon receiving the location request message, the MC's current serving MR sends a location update message to the gateway, announcing that it is the new AMR of the MC. When the gateway receives the location update message, it updates the location information of the MC in the location database, i.e., marking that the current serving MR of the MC becomes its new AMR. After the location search procedure, the forwarding chain is reset and subsequent data packets will be routed to the new AMR of the MC. The gain is that the routing path is shortened, thus reducing the packet delivery cost.

5.1.2 Intranet Session

When a new Intranet session is initiated towards an MC, a location search procedure similar to the one above is executed to locate the current serving MR of the destination MC. Fig. 3 illustrates the location search procedure for newly arrived Intranet sessions. Let MC1 and MC2

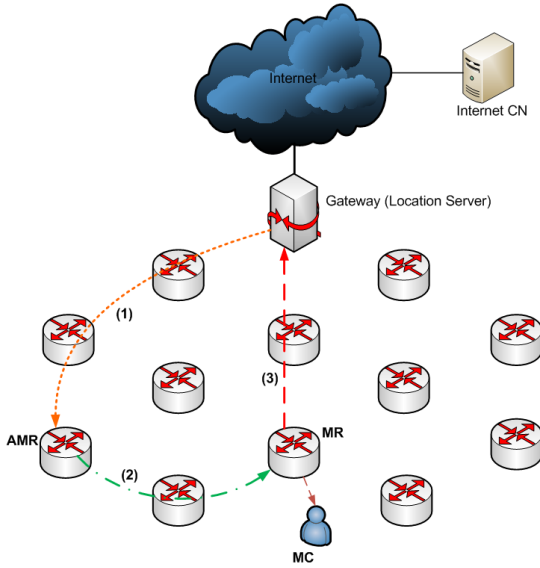


Fig. 2. The location search procedure for newly arrived Internet sessions in the dynamic anchor scheme.

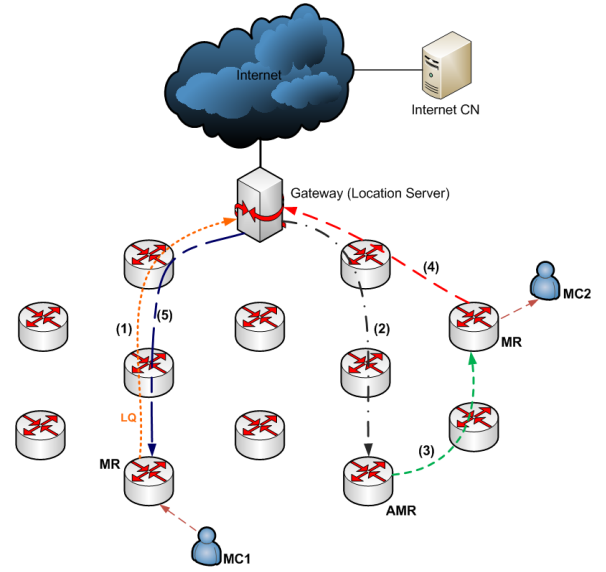


Fig. 3. The location search procedure for newly arrived Intranet sessions in the dynamic anchor scheme.

denote the source mesh client and destination mesh client, respectively. When a new Intranet session initiated towards MC2 by MC1 arrives at the current serving MR of MC1 (MR1), MR1 sends a location request message to the gateway, which queries the location database and routes the location request message to the AMR of MC2, which forwards the location request message to MC2's current serving MR (MR2). Upon receiving the location request message, MR2 replies to the gateway with a location update message, announcing that it is the new AMR of MC2. The location information of MC2 in the location database is updated by the gateway after it receives the location reply. The updated location information of MC2 is sent to MR1 in response to the location request and the location search procedure is completed. After the location search procedure, subsequent data packets will be routed to the new AMR of MC2 directly.

6 PERFORMANCE MODEL

In this section, we develop analytical models for evaluating the performance of the proposed schemes. The analytical models are built using stochastic Petri nets (SPN). We choose stochastic Petri nets as the tool for performance modeling because: 1) A SPN model is a concise representation of the underlying Markov or semi-Markov chain that may have a large number of states; 2) A SPN model is capable of reasoning the behavior of an MC, as it migrates among states in response to system events. Table 1 summarizes the parameters and notations used in the following sections.

6.1 Static Anchor Scheme

The SPN model for the static anchor scheme is shown in Fig. 4. This model essentially captures the behaviors of an MC while it is moving around within a WMN. The

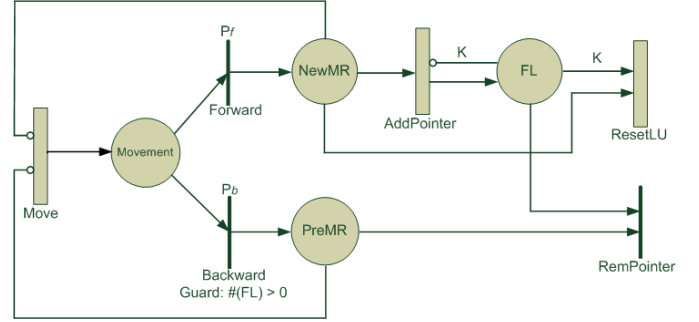


Fig. 4. The SPN model for the static anchor scheme.

interpretation of places and transitions defined in the SPN model is given in Table 2. Here we briefly describe how the SPN model is constructed:

- The movement of an MC is modeled by transition *Move*, the transition rate of which is represented by the mobility rate σ of an MC. When an MC moves to a new MR and is re-associated with it, thus incurring a location handoff, a new token is put into place *Movement*, meaning that the location handoff is completed.
- An MC can move forward to a new MR, or move backward to the most recently visited MR. The SPN model differentiates between these two cases using two immediate transitions, i.e., *Forward* and *Backward*. Probability P_f and P_b are associated with *Forward* and *Backward*, respectively. The values of P_f and P_b depend on the network coverage model used, which will be introduced in Section 6.3.
- If an MC moves forward to a new MR, transition *Forward* is fired and a new token is put into place *NewMR*. If the current forwarding chain length is smaller than K , a new forwarding pointer needs to be setup. This is modeled by enabling and firing

TABLE 1
The parameters and notations used in performance modeling and analysis.

Parameter	Notation
σ	Mobility rate
λ_I/μ_I	Internet session arrival/departure rate
λ_L/μ_L	Intranet session arrival/departure rate
λ_{pu}	Average uplink (outcoming) packet arrival rate of Internet sessions
λ_{pd}	Average downlink packet arrival rate of Internet sessions
λ_{pL}	Average packet arrival rate of Intranet sessions
N_{pI}	Average number of downlink (incoming) packets per Internet session
N_{pL}	Average number of incoming packets per Intranet session
N_I	Instantaneous average number of active Internet correspondence nodes per MC
N_L	Instantaneous average number of active Intranet correspondence nodes per MC
N	Number of MRs in a WMN
α	Average distance (number of hops) between the gateway and an arbitrary MR
β	Average distance (number of hops) between two arbitrary MRs
γ	Ratio of the Internet session arrival rate to the Intranet session arrival rate
δ	Ratio of the average duration of Internet sessions to the one of Intranet sessions
ζ	Ratio of the downlink packet arrival rate to the uplink packet arrival rate of Internet sessions
τ	One-hop communication latency between two neighboring MRs
ω	Rate of reconnection when an MC switches from sleep mode back to active mode
P_f	Probability that an MC moves forward
P_b	Probability that an MC moves backward
P_g	Probability that an Intranet packet is routed to the gateway due to unknown location information of the destination MC in the WMM scheme
P_q	Probability that the location query procedure is executed in the WMM scheme
P_r	Probability that an MR broadcasts the route request message in the WMM scheme

TABLE 2
The interpretation of places and transitions defined in the SPN model for the static anchor scheme.

Symbol	Interpretation
<i>Move</i>	A timed transition modeling MC movement
<i>Movement</i>	$\text{Mark}(\text{Movement})=1$ means that the MC just moved
<i>Forward</i>	An immediate transition modeling forward movement
<i>Backward</i>	An immediate transition modeling backward movement
<i>NewMR</i>	$\text{Mark}(\text{newMR})=1$ means that the MC just moved forward to a new MR
<i>PreMR</i>	$\text{Mark}(\text{PreMR})=1$ means that the MC just moved backward to the most recently visited MR
<i>AddPointer</i>	A timed transition modeling the event of setting up a forwarding pointer between two neighboring MRs
<i>FL</i>	$\text{Mark}(\text{FL})$ indicates the forwarding chain length
<i>ResetLU</i>	A timed transition modeling the event of updating the location database and resetting the forwarding chain due to MC movement that causes the threshold K to be exceeded
<i>RemPointer</i>	An immediate transition modeling the event of removing a forwarding pointer due to a backward movement

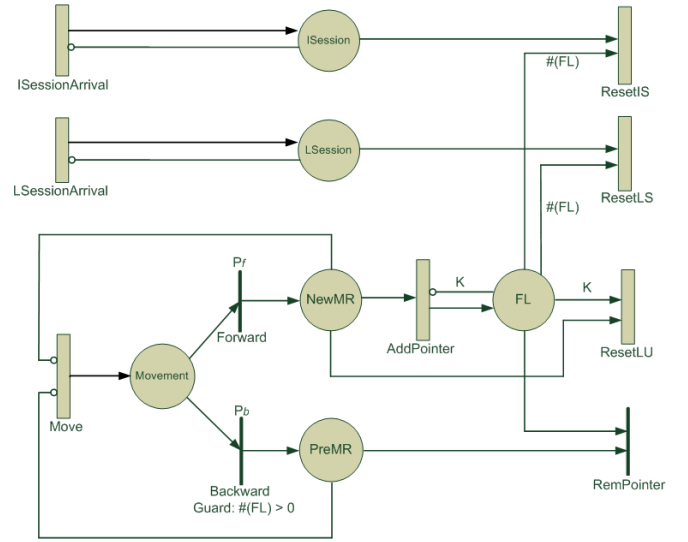


Fig. 5. The SPN model for the dynamic anchor scheme.

transition *AddPointer*, if the number of tokens in place *FL* is less than K .

- If the number of tokens in place *FL* is already equal to K , a new forward movement triggers a location update and the forwarding chain is reset. This is modeled by firing transition *ResetLU*, when there are K tokens in place *FL* and a token in place *NewMR*. The firing of transition *ResetLU* will consume all the K tokens in place *FL*, representing that the forwarding chain is reset.
- If an MC moves backward to the most recently visited MR, transition *Backward* is fired and a token is put into place *PreMR*. This will subsequently enable and fire immediate transition *RemPointer*. Removing a pointer upon a backward movement is modeled by an immediate transition as forwarding pointers will be purged automatically.
- Notice that it is only reasonable for an MC to move backward, when the current serving MR of the MC is not its AMR, i.e., the forwarding chain length is not zero. This is modeled by associating an enabling function ($\text{Mark}(\text{FL}) > 0$) with transition *Backward*.
- The inhibitor arcs in the SPN model are used to model the assumption that an MC will not move during a location handoff.
- The transition rates of transition *AddPointer* and *ResetLU* are parameterized in Section 6.3.

6.2 Dynamic Anchor Scheme

The SPN model for the dynamic anchor scheme is shown in Fig. 5. Because the handling of location handoffs is the same in both schemes, part of this SPN model is identical to the SPN model for the static anchor scheme. The SPN model for the dynamic anchor scheme has 4 new transitions and 2 new places to capture the behavior of the scheme when new sessions arrive toward an MC. Table 3 gives the interpretation of the additional

TABLE 3

The interpretation of additional places and transitions defined in the SPN model for the dynamic anchor scheme.

Symbol	Interpretation
$I_{SessionArrival}$	A timed transition modeling the arrival of Internet sessions
$L_{SessionArrival}$	A timed transition modeling the arrival of Intranet sessions
$I_{Session}$	A place holding newly arrived Internet sessions
$L_{Session}$	A place holding newly arrived Intranet sessions
$ResetIS$	A timed transition modeling resetting the forwarding chain due to a newly arrived Internet session
$ResetLS$	A timed transition modeling resetting the forwarding chain due to a newly arrived Intranet session

transitions and places. Here we briefly describe how the additional part of the SPN model for the dynamic anchor scheme is constructed.

- The event of new (Internet or Intranet) session arrival towards an MC is modeled by firing transition $I_{SessionArrival}$ or $L_{SessionArrival}$, the transition rates of which are λ_I and λ_L , respectively. The firing of transition $I_{SessionArrival}$ or $L_{SessionArrival}$ causes a token to be put into place $I_{Session}$ or $L_{Session}$, depending on the type of the new session.
- In the dynamic anchor scheme, the arrival of a new session causes the current forwarding chain to be reset, and the new MR to become its new AMR. This is modeled by firing transition $ResetIS$ for a newly arrived Internet session or $ResetLS$ for a newly arrived Intranet session. The firing of transition $ResetIS$ or $ResetLS$ consumes all the tokens in place FL , modeling that the current forwarding chain is reset upon a new session arrival.
- The inhibitor arcs are used to model the assumption that new sessions will not arrive during the course of a forwarding chain reset.
- The transition rates of transition $ResetIS$ and $ResetLS$ are parameterized in Section 6.3.

6.3 Parameterization

Transition $AddPointer$ models the event of setting up a forwarding pointer between two neighboring MRs. Setting up a new forwarding pointer involves a round-trip communication between two neighboring MRs, i.e., the communication cost is 2τ . Therefore, the transition rate $\mu_{AddPointer}$ of transition $AddPointer$ is the reciprocal of the communication delay, i.e.:

$$\mu_{AddPointer} = \frac{1}{2\tau} \quad (1)$$

Transition $ResetLU$ models the event of resetting the forwarding chain of an MC during a location update. Resetting the forwarding chain in this case involves updating the MC's location information in the location database, and sending a location update message to each

active Intranet correspondence node (CN) of the MC. The signaling cost thus consists of two parts. The first part is for the new MR to inform the gateway to update the MC's location information in the location database, i.e., $\alpha\tau$. The second part is for the new MR to inform all the active Intranet CNs of the MC, i.e., $N_L\beta\tau$. Thus, the transition rate $\mu_{ResetLU}$ of transition $ResetLU$ is:

$$\mu_{ResetLU} = \frac{1}{(\alpha + N_L\beta) \times \tau} \quad (2)$$

Transition $ResetIS$ models the event of resetting the forwarding chain of an MC due to the arrival of a new Internet session. As introduced in Section 5.1, in this event, a location request message is sent from the gateway to the current serving MR of the MC, and a location update message is replied to the gateway in response to the location request. The location update message is also sent to all the active Intranet CNs of the MC. The communication cost in this case is therefore $(2\alpha + N_L\beta + i) \times \tau$, where i is the current length of the forwarding chain. Thus, the transition rate $\mu_{ResetIS}$ of transition $ResetIS$ is:

$$\mu_{ResetIS} = \frac{1}{(2\alpha + N_L\beta + i) \times \tau} \quad (3)$$

Transition $ResetLS$ models the event of resetting the forwarding chain of an MC due to the arrival of a new Intranet session. Let MC1 and MC2 denote the source MC and destination MC, respectively. As discussed in Section 5.1, in this event, a location request message is sent from the serving MR (MR1) of MC1 to the current serving MR (MR2) of MC2, forwarded by the gateway. In response to the location request, a location update message is replied by MR2 to the gateway, which then forwards the updated location information of MC2 to MR1. The location update message is also sent to all the active Intranet CNs of MC2. The communication cost in this case is thus $(4\alpha + N_L\beta + i) \times \tau$, where i is the current length of the forwarding chain. Thus, the transition rate $\mu_{ResetLS}$ of transition $ResetLS$ is:

$$\mu_{ResetLS} = \frac{1}{(4\alpha + N_L\beta + i) \times \tau} \quad (4)$$

Immediate transitions $Forward$ and $Backward$ are associated with probability P_f and P_b , respectively. These probabilities depend on the network coverage model and the mobility model assumed. In this paper, we assume the square-grid mesh network model for WMNs [14] and the random walk model [15] for MCs. For the square-grid mesh network model, we assume that all MRs have the same wireless range that covers direct neighboring MRs located in four orthogonal directions. Additionally, we consider a relatively large wireless mesh network simulated by a wrapped-around structure such that each MR has four direct neighbors. Under these models, an MC can move randomly from the current MR to one of the MR's four neighbors with equal probability, i.e., $1/4$. Thus, P_f and P_b can be calculated as:

$$P_f = \frac{3}{4}, P_b = \frac{1}{4} \quad (5)$$

Packet arrival rates, e.g., λ_{pu} , λ_{pd} , and λ_{pL} , are effective rates over the continuous time space. Because packets arrive only when there are on-going sessions, these rates depend on session arrival rates, e.g., λ_I and λ_L , and average numbers of packets per session, e.g., N_{pI} and N_{pL} . We use a $M/M/\infty$ queue to model the process of session arrival towards an MC. The average number of on-going sessions of an MC at any instance can be obtained using queueing theory, and thus the effective packet arrival rate can be derived. Specifically, the average number of on-going Internet (Intranet) sessions of an MC denoted by N_I (N_L) at any instance is calculated as:

$$\begin{aligned} N_I &= \frac{\lambda_I}{\mu_I} \\ N_L &= \frac{\lambda_L}{\mu_L}, \text{ with } \lambda_L = \frac{\lambda_I}{\gamma} \text{ and } \mu_L = \delta \times \mu_I \end{aligned} \quad (6)$$

Notice that in Equation 6, we state that $\mu_L = \delta \times \mu_I$. This is because according to queueing theory, the ratio of the average duration of Internet sessions to the average duration of Intranet denoted by δ is defined as: $\delta = \frac{1/\mu_I}{1/\mu_L} = \frac{\mu_L}{\mu_I}$.

The effective downlink (incoming) and uplink (outgoing) packet arrival rates of Internet sessions and the effective packet arrival rate of Intranet sessions are derived as:

$$\begin{aligned} \lambda_{pd} &= N_{pI} \times N_I \times \lambda_I \\ \lambda_{pu} &= \frac{\lambda_{pd}}{\zeta} \\ \lambda_{pL} &= N_{pL} \times N_L \times \lambda_L \end{aligned} \quad (7)$$

6.4 Performance Metrics

We use the total communication cost incurred per time unit as the metrics for performance evaluation and analysis. The total communication cost includes the signaling cost of location handoff and update operations, the signaling cost of location search operations, and the packet delivery cost. For the static anchor scheme, the signaling cost of location search operations is incurred when a new Intranet session is initiated towards an MC. For the dynamic anchor scheme, the signaling cost of location search operations represents the cost for tracking the current serving MR of an MC and resetting the forwarding chain when new sessions are initiated towards an MC. In the following, we use C_{static} and $C_{dynamic}$ to represent the total communication cost incurred per time unit by the static anchor scheme and dynamic anchor scheme, respectively. $C_{location}$, C_{search} , and $C_{delivery}$ are used to represent the signaling cost of a location handoff operation, the signaling cost of a location search operation, and the cost to deliver a packet, respectively. Subscripts are associated with these cost terms. Specifically, subscript "I" and "L" denote Internet and Intranet sessions, respectively. Subscript "s" and "d" denote the static anchor scheme and dynamic anchor scheme, respectively.

For the static anchor scheme, the total communication cost incurred per time unit is calculated as:

$$\begin{aligned} C_{static} &= C_{location} \times \sigma + C_{search,L} \times \lambda_L \\ &+ C_{delivery,I} \times \lambda_{pd} + C_{delivery,L} \times \lambda_{pL} \end{aligned} \quad (8)$$

For the dynamic anchor scheme, the total communication cost incurred per time unit is calculated:

$$\begin{aligned} C_{dynamic} &= C_{location} \times \sigma + C_{search,I} \times \lambda_I \\ &+ C_{search,L} \times \lambda_L + C_{delivery,I} \times \lambda_{pd} \\ &+ C_{delivery,L} \times \lambda_{pL} \end{aligned} \quad (9)$$

The stochastic models underlying the SPN models shown in Fig. 4 and Fig. 5 are continuous-time Markov chains. Let P_i denote the probability that the underlying Markov chain is found in a state that the current forwarding chain length is i . Let S denote the set of states in the underlying Markov chain. Then $C_{location}$ can be calculated as:

$$C_{location} = \sum_S P_i C_{i,location} \quad (10)$$

where $C_{i,location}$ is calculated as:

$$C_{i,location} = \begin{cases} 2\tau & \text{if } 1 \leq i < K \\ (\alpha + N_L\beta) \times \tau & \text{if } i = K \end{cases} \quad (11)$$

The location search cost C_{search} can be calculated as:

$$C_{search} = \sum_S P_i C_{i,search} \quad (12)$$

where $C_{i,search}$ is either $C_{i,search,s,L}$, $C_{i,search,d,I}$, or $C_{i,search,d,L}$. The equations for calculating $C_{i,search,s,L}$, $C_{i,search,d,I}$, and $C_{i,search,d,L}$ are shown as follows:

$$\begin{aligned} C_{i,search,s,L} &= 2\alpha\tau \\ C_{i,search,d,I} &= (2\alpha + N_L\beta + i) \times \tau \\ C_{i,search,d,L} &= (4\alpha + N_L\beta + i) \times \tau \end{aligned} \quad (13)$$

The packet delivery cost $C_{delivery}$ is calculated in a similar way as follows:

$$C_{delivery} = \sum_S P_i C_{i,delivery} \quad (14)$$

where $C_{i,delivery}$ is either $C_{i,delivery,I}$ or $C_{i,delivery,L}$. $C_{i,delivery,I}$ and $C_{i,delivery,L}$ can be calculated as follows:

$$\begin{aligned} C_{i,delivery,I} &= (\alpha + i) \times \tau \\ C_{i,delivery,L} &= (\beta + i) \times \tau \end{aligned} \quad (15)$$

These costs can be calculated by associating the above SPN models with reward functions and calculating the steady-state rewards, using the SPNP [16] package.

TABLE 4
The parameters and their default values used.

Parameter	Value	Parameter	Value	Parameter	Value
γ	10	δ	5	λ_I	$\frac{1}{600}$
μ_I	$\frac{1}{600}$	N_I	200	N_L	100
α	30	β	30	N	1000
P_g	5.0%	P_q	10.0%	P_r	50.0%
τ	1	ω_{active}	$\frac{1}{1200}$	ω_{sleep}	$\frac{1}{600}$

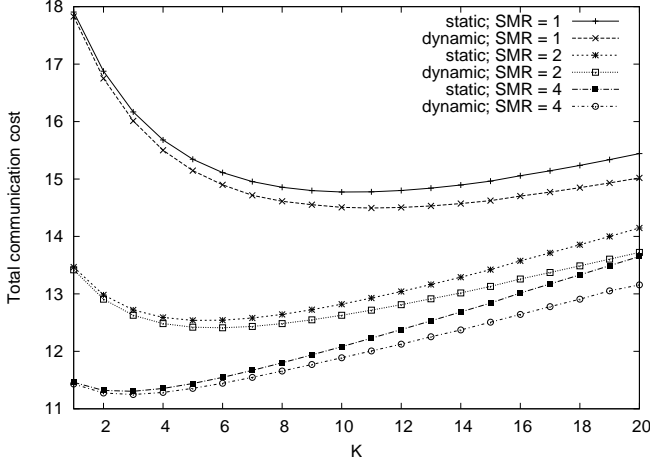


Fig. 6. Total communication cost vs. K .

7 PERFORMANCE ANALYSIS

In this section, we analyze the performance of the proposed schemes, in terms of the total communication cost incurred per time unit, i.e., C_{static} and $C_{dynamic}$. Additionally, we compare the proposed schemes with two baseline schemes. In the first baseline scheme, pointer forwarding is not used, meaning that every movement of an MC will trigger a location update event. Thus it is essentially the same as having $K = 0$ in the proposed schemes. In the second baseline scheme, pointer forwarding is employed, but the same threshold of the forwarding chain length is preset for all MCs, e.g., $K = 4$ for all MCs. We also carry out performance comparison between our schemes and the WMM scheme proposed in [5]. A detailed description of the WMM scheme and the SPN model constructed for it will be given in Section 7.3. Table 4 lists the parameters and their default values used in the performance evaluation. The time unit used is second. All costs presented below are normalized with respect to $\tau = 1$.

7.1 Proposed Pointer Forwarding Schemes

Fig. 6 shows the total communication cost as a function of K in both schemes, under different SMRs. As shown in the figure, for both schemes, there exists an optimal threshold K that results in minimized total communication cost. For example, when $SMR = 1$, the optimal K is 10 for the static anchor scheme, whereas it is 11 for the dynamic anchor scheme. Another observation is that the total communication cost in both schemes decreases, as

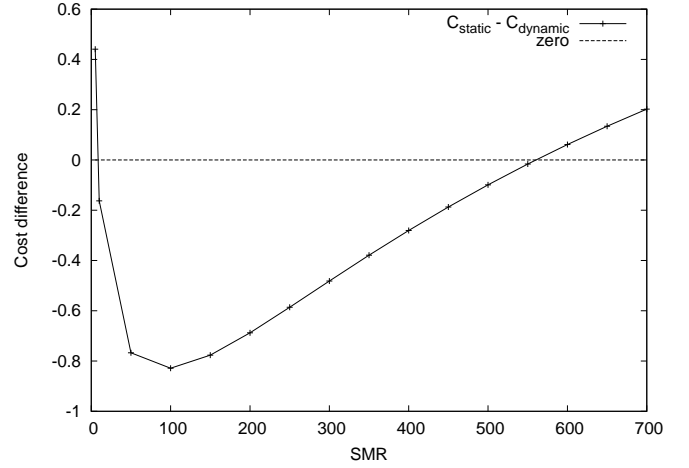


Fig. 7. $C_{static} - C_{dynamic}$ vs. SMR.

SMR increases. This is because given fixed session arrival rates, the mobility rate decreases as SMR increases, thus the signaling cost incurred by location management as well as the total communication cost decreases.

It is interesting to note in Fig. 6 that the dynamic anchor scheme always performs better than the static anchor scheme, under the given parameter values in Table 4 and the investigated SMRs. However, since the dynamic anchor scheme incurs additional overhead of resetting the forwarding chain of an MC upon session arrival, it is expected that in cases that session arrival rates are considerably high, the additional overhead will offset its advantage. This is demonstrated by Fig. 7, which plots the cost difference between the static anchor scheme and dynamic anchor scheme, as a function of SMR, with $\lambda_I = \frac{1}{30}$ and $\mu_I = \frac{1}{30}$.

It can be seen in Fig. 7 that initially when SMR is small, the dynamic anchor scheme performs better than the static anchor scheme. However, as SMR increases, there exists a crossover point beyond which the static anchor scheme starts performing better than the dynamic anchor scheme. It is interesting to see that there exists another crossover point of SMR beyond which the dynamic anchor scheme is superior again. This is because when SMR is considerably large, i.e., when the mobility rate is considerably small relative to the session arrival rate, resetting the forwarding chain due to new session arrival in the dynamic anchor scheme essentially makes the AMR of an MC be the same as its current serving MR most of the time, thus significantly reducing the packet delivery cost. It is worth noting that because the total communication cost is a per time unit measure, the accumulative effect of even a small cost difference will be significant.

Fig. 8 plots the optimal threshold K as a function of SMR in both schemes. It can be observed that for both schemes, the optimal K decreases, as SMR increases. This is because as SMR increases, with fixed session arrival rates, the mobility rate decreases, thus a short forwarding chain is favorable to reduce the service de-

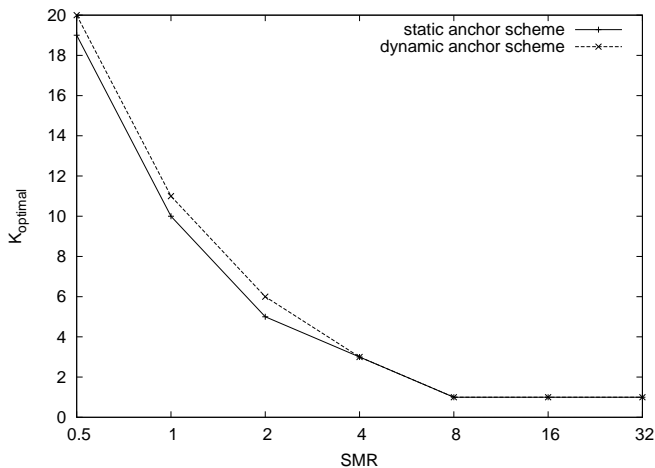


Fig. 8. Optimal K vs. SMR.

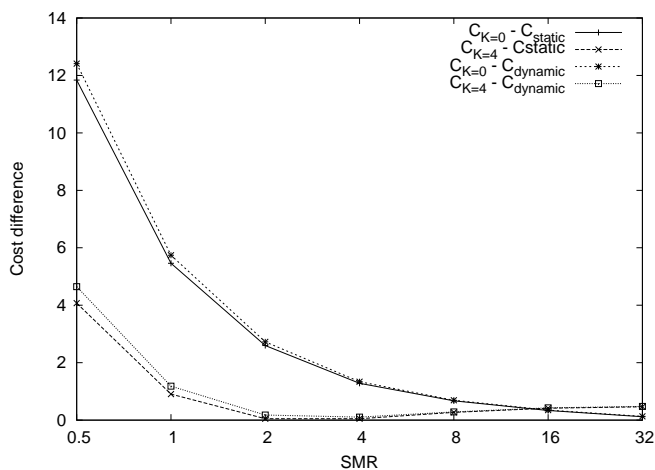


Fig. 9. Cost difference vs. SMR between the proposed schemes and baseline schemes.

livery cost. It is also interesting to see that the optimal K in the static anchor scheme is always smaller than or equal to the one in the dynamic anchor scheme, due to resetting the forwarding chain of an MC upon new session arrival in the dynamic anchor scheme.

7.2 Proposed Schemes vs. Baseline Schemes

Fig. 9 shows the difference of the total communication cost between the proposed schemes and baseline schemes, as a function of SMR. For example, $C_{K=4} - C_{dynamic}$ in the figure means the difference of the total communication cost between the dynamic anchor scheme and the baseline scheme in which a fixed threshold $K = 4$ is applied to all MCs. The minimum total communication cost under the optimal threshold K is used for the proposed schemes. It can be seen in the figure that the proposed schemes perform significantly better than both baseline schemes, especially when SMR is small. The cost differences decrease as SMR increases. The reason is that given fixed session arrival rates, the mobility rate and accordingly the signaling cost incurred

by location management decrease as SMR increases, in both the proposed schemes and baseline schemes. As can be seen in the figure, however, the proposed schemes are always superior to both baseline schemes. The comparison demonstrates the advantage of identifying the optimal threshold of the forwarding chain length on a per-user basis.

7.3 The WMM Scheme

WMM [5] is a routing-based mobility management scheme, in the sense that location management is integrated with packet routing. This idea is earlier adopted by Cellular IP [17] and HAWAII [18], both of which are routing-based micro-mobility management schemes for Mobile IP networks. Each MR in WMM employs a *proxy table* to store the location information of MCs for which it has routed packets. Location information is also carried out in the IP header of every data packet. Location information is synchronized in every MR along the route of a packet between the MR's proxy table and the IP header of the packet, based on the relative magnitude of time stamps they carry.

In order to route Internet packets to an MC, the gateway must know the location information of the MC, i.e., the address of the MC's current serving MR. If the MC's location information is not found in the gateway's proxy table, a location query procedure based on broadcasting must be executed, which incurs significant overhead. If the MC's location information stored in the gateway's proxy table is fresh, packets can be routed to the destination directly. On the other hand, if the stored location information is obsolete, i.e., the MC's current serving MR is different from the one recorded in the proxy table, packets will be routed to the obsolete serving MR first, which then forwards them to the MC's current serving MR. This is similar to delivering packets by following a forwarding chain.

To route an Intranet packet, the current serving MR (MR1) of the source MC (MC1) uses different routing strategies, depending on whether its local proxy table has an entry for the destination MC (MC2). If its proxy table has an entry for MC2, MR1 routes the packet to the recorded serving MR of MC2; otherwise, it routes the packet to the gateway. In the first case, if the recorded serving MR of MC2 is obsolete, the packet will be routed to the obsolete serving MR first, which then forwards the packet to MC2's current serving MR. This is again similar to the forwarding chain approach.

Based on the above discussion, we argue that the WMM scheme can be viewed virtually as a variant of mobility management schemes based on pointer forwarding. The first Internet packet originated from an MC after its most recent location handoff essentially serves as a location update message in the WMM scheme. Additionally, an Intranet packet originated from an MC that is routed to the gateway due to unknown location information of the destination is essentially a location

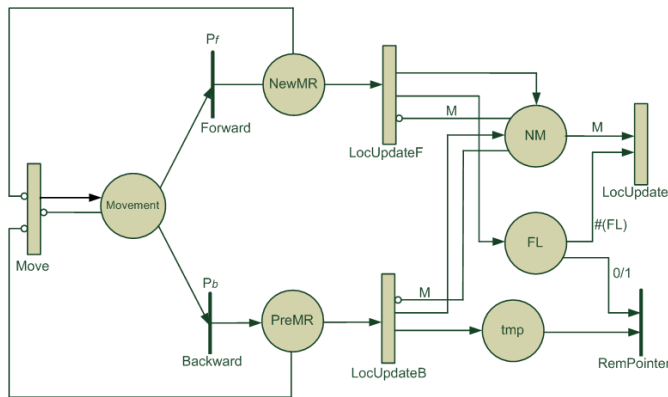


Fig. 10. The SPN model for the WMM scheme.

update message as well. Between two consecutive (Internet or Intranet) packets originated from an MC arriving at the gateway, movement of the MC may trigger a series of location handoffs and a chain of proxy table entries is setup along the path of its movement. Such a chain of proxy table entries is similar to a chain of forwarding pointers. In this sense, each data packet originated from an MC arriving at the gateway essentially resets the forwarding chain, because the gateway's proxy table is updated according to the location information of the MC carried in the packet.

The average time interval between two reset operations is the same as the average inter-arrival time between two data packets originated from an MC reaching the gateway. Let P_g denote the probability that an Intranet packet originated from an MC arrives at the gateway due to unknown location information of the destination. The effective arrival rate of packets originated from an MC reaching the gateway is therefore $\lambda_{pu} + P_g \times \lambda_{pL}$, and the average inter-arrival time T_{lu} of such two consecutive packets can be calculated as:

$$T_{lu} = \frac{1}{\lambda_{pu} + P_g \times \lambda_{pL}} \quad (16)$$

The average distance (number of hops) an MC can move during the time interval T_{lu} is therefore $M = T_{lu} \times \sigma$, which is essentially the threshold of distance an MC can move between two consecutive forwarding chain reset operations. It is important to realize that generally the distance of movement is different from the forwarding chain length, because backward movement reduces the forwarding chain length by 1.

Based on the above observation, we develop an SPN model for the WMM scheme, as shown in Fig. 10. Notice that we use separate places NM and FL to represent the distance of movement and the forwarding chain length, respectively. As discussed above, a threshold M is associated with the arc from place NM to transition $LocUpdate$. Due to the space limit, we omit the description of how the SPN model is constructed.

The total communication cost incurred by the WMM scheme, denoted by C_{wmm} , consists of the signaling

cost incurred by handling location handoffs, the packet delivery cost, and the location query cost.

$$C_{wmm} = C_{location} \times \sigma + C_{delivery,I} \times \lambda_{pd} + C_{delivery,L} \times \lambda_{pL} + C_{query} \times P_q \times \omega \quad (17)$$

Location handoffs are handled in the WMM scheme by a registration procedure, which involves a round-trip communication between two neighboring MRs. Therefore $C_{location} = 2\tau$ in the WMM scheme. Let i denote the number of tokens in place FL in Fig. 10, i.e., i is the length of the forwarding chain, then the cost of Internet packet delivery is calculated as: $C_{delivery,I} = (\alpha + i) \times \tau$. Intranet sessions in WMNs, which involve two peers interacting with each other bi-directionally, usually have similar packet arrival rates in both directions. It indicates that the location information of each peer stored by the serving MR of the other peer is updated in a similar rate. Thus, packets sent and received between two peers involved in an Intranet session usually travel the same distance β on the average. The delivery cost of Intranet packets denoted by $C_{delivery,L}$ is therefore $\beta\tau$ in the WMM scheme.

The location query procedure, executed by the gateway, is required only when there are packets to be sent to an MC before the MC initiates the first Internet session, after 1) the MC newly enters into a WMN; or 2) the MC wakes up and reconnects to the WMN after staying in sleep mode for some time (an MC may voluntarily disconnect from a WMN and switch to sleep mode to save battery life). In both cases, packets to be sent to the MC will be routed to the gateway, because the MC's current serving MR is unknown. The probability denoted by P_q that the location query procedure is executed in the above cases is investigated in [5]. Typically, an MC switches alternatively between active mode and sleep mode during its stay in a WMN. Let ω_w and ω_s denote the rate of switching from sleep mode to active mode and the rate of reverse mode switching, respectively. Let ω in Equation 17 denote the reconnection rate of an MC. Then ω can be calculated as:

$$\omega = \frac{1}{\frac{1}{\omega_w} + \frac{1}{\omega_s}} = \frac{\omega_w \times \omega_s}{\omega_w + \omega_s} \quad (18)$$

To locate an MC whose current serving MR is unknown, the location query procedure is executed by broadcasting a route request message to all MRs. The current serving MR of the MC replies to the gateway a route response message upon receiving the route request message. Thus, the signaling cost of the location query procedure denoted by C_{query} is the sum of the cost of broadcasting the route request message and the cost of transmitting the route response message. The cost of transmitting the route response message is $\alpha\tau$. Here we present a brief analysis of the cost of broadcasting the route request message. In the following, we define the cost of broadcasting a route request message as the number of broadcasts required to deliver the message

to all MRs, instead of the sum of one-hop transmission costs, because of the broadcasting nature of wireless transmission. It is important to realize that this definition of the broadcasting cost is appropriate only by assuming that all MRs use the same omnidirectional wireless channel for communication. For future multi-radio multi-channel WMNs that are built upon advanced radio techniques, e.g., cognitive radio and directional antenna, the cost would be underestimated.

We assume that a flooding algorithm based on *self-pruning* [19] is used for broadcasting in WMNs. Self-pruning utilizes the knowledge of direct neighborhood of each node to reduce redundant rebroadcasts, which is a serious problem in flooding-based broadcasting algorithms, commonly referred to as the *broadcast storm* problem [20]. In self-pruning, each node ν maintains a list of direct neighbors, denoted by $N(\nu)$. A node ν_j who receives a flooding packet from its neighbor ν_i rebroadcasts the packet only if $N(\nu_i) - N(\nu_j)$ is nonempty and it is the first time ν_j receives the packet. This indicates that each node will rebroadcast a flooding packet no more than once. Thus, the cost of flooding the route request message in WMNs, i.e., the number of broadcasts required to deliver the message to all MRs, can be calculated as: $P_r \times N$, where P_r denotes the average probability that an MR rebroadcasts the route request message, and N denotes the number of MRs. Therefore, we have $C_{query} = P_r \times N + \alpha\tau$.

7.4 Proposed Schemes vs. The WMM Scheme

To analyze the performance of the WMM scheme, we introduce the parameter ζ , which represents the ratio of the downlink packet arrival rate to the uplink packet arrival rate of Internet sessions, based on the observation of traffic asymmetry between the downlink and uplink [21]–[23], i.e., typically the traffic load on the downlink is much larger than the one on the uplink. Traffic asymmetry is especially pronounced for mobile multimedia applications, e.g., real-time audio/video streaming, on-line radio, online interactive games, etc., because in mobile multimedia applications, small content requests are transmitted via the uplink, whereas the requested content that is typically large is transmitted via the downlink. Due to traffic asymmetry, it is expected that the downlink packet arrival rate is much higher than the uplink packet arrival rate in mobile Internet applications, i.e., ζ is expected to be reasonably large.

Fig. 11 plots the total communication cost per time unit incurred by the WMM scheme denoted by C_{wmm} as a function of ζ , under different SMRs. As can be seen in the figure, C_{wmm} increases almost linearly as ζ increases. This is because as ζ increases, M and accordingly the forwarding chain length increase, thus causing the packet delivery cost to increase. As in our schemes, C_{wmm} also increases as SMR increases. It is also interesting to see in the figure that the slope of the cost curve is inversely proportional to SMR, i.e., it is in direct proportion to the

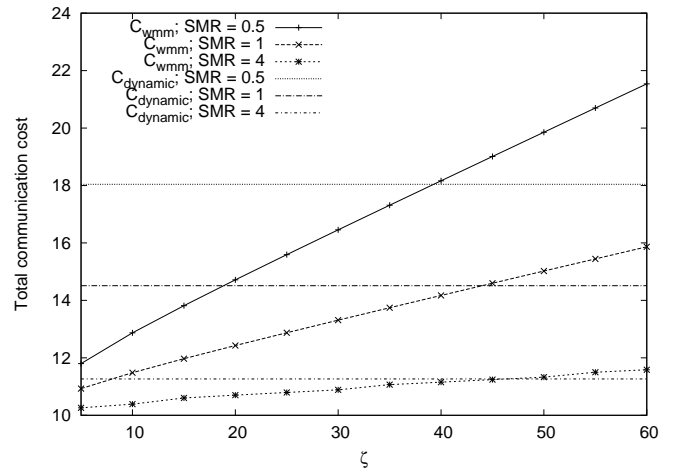


Fig. 11. Total communication cost vs. ζ in the WMM scheme.

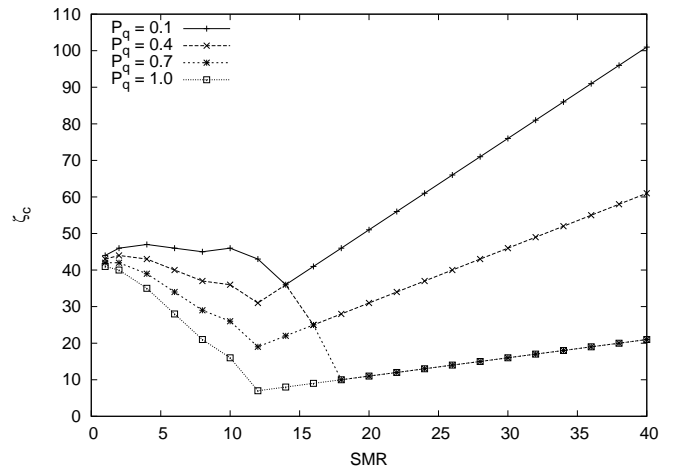


Fig. 12. ζ_c vs. SMR.

mobility rate. Therefore, when the mobility rate is high, the performance of the WMM scheme degrades quickly as ζ increases. This is a major drawback of routing-based mobility management schemes, in that the propagation of updated location information of MCs relies on packet routing, thereby incurring possibly significant delay.

Fig. 11 also shows the performance of the dynamic anchor scheme under the investigated SMRs as references. The performance data of the dynamic anchor scheme shown in Fig. 11 takes into consideration of the cost incurred when an MC newly enters into a WMN and each time when the MC wakes up and reconnects to the WMN after being in sleep mode for some time. Let $C_{reconnect}$ denote the cost. In the proposed schemes, a location update message is sent to the gateway when either one of these two events happens. Thus, $C_{reconnect} = \alpha\tau$ in the proposed schemes. It can be seen in Fig. 11 that under a specific SMR, there exists a crossover point of ζ beyond which the dynamic anchor scheme performs better than the WMM scheme. Let ζ_c denote the crossover point.

Fig. 12 plots ζ_c as a function of SMR, under different

query probabilities. It is interesting to observe that each curve in Fig. 12 exhibits a shape consisting of two segments with clearly different trends. This is the result of varying contributions to the total communication cost as SMR increases between the signaling cost incurred by location management and the service delivery cost. Specifically, when SMR is small, i.e., when the mobility rate is high, the contribution of the signaling cost incurred by location management is significant, and it is much larger in the dynamic anchor scheme than in the WMM scheme, because location update in the WMM scheme incurs minimum overhead. Therefore, when SMR is small, a relatively large ζ_c is necessary for the dynamic anchor scheme to yield better performance than the WMM scheme, and ζ_c roughly decreases as SMR increases. As SMR increases, the contribution of the signaling cost incurred by location management becomes less significant, whereas the relative contribution of the service delivery cost increases. Intuitively, there exists a point of SMR beyond which the trend is shifted, i.e., ζ_c starts increasing as SMR increases. As indicated above, the WMM scheme favors small mobility rates, because its performance drops quickly when the mobility rate is high. As SMR increases, the mobility rate decreases (the session arrival rates are fixed), therefore the minimum ζ required for the dynamic anchor scheme to perform better than the WMM scheme, i.e., ζ_c , increases.

Fig. 12 also shows that the query probability denoted by P_q significantly affects the performance of the WMM scheme. As investigated in [5], P_q is dependent on various parameters, and can range from lower than 5% to higher than 95%. We expect that P_q will not be significantly low in normal network traffic conditions. For example, unless γ is extremely large, e.g., $\gamma \geq 1000$, P_q will typically be higher than 10%, and may even be above 50%, according to the analysis of P_q presented in [5]. Therefore, we expect that the typical range of ζ_c is [10, 100] in normal network traffic conditions. As discussed above, it is expected that ζ is reasonably large for typical mobile Internet applications, due to traffic asymmetry between the downlink and uplink. Moreover, ζ is expected to be particularly large for mobile Internet multimedia applications. Thus we argue that this range is reasonable, and we conclude that the dynamic anchor scheme is superior to the WMM scheme, when mobile Internet applications dominate the network traffic in WMNs.

7.5 Sensitivity Analysis

In this section, we investigate the sensitivity of analytical results with respect to various parameters characterizing the network condition and structure, e.g., α , β , and the network coverage model assumed.

As can be seen in Section 6.4, α and β are two critical parameters that determine the cost of mobility management as well as the cost of packet delivery. Fig. 13 compares the total communication cost between the proposed schemes and the baseline schemes as introduced

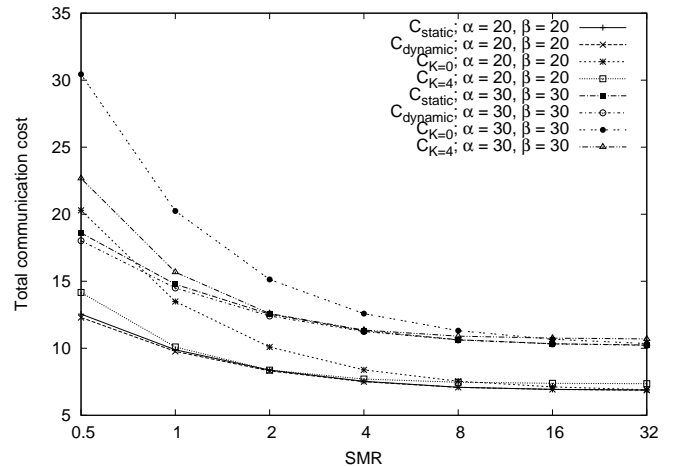


Fig. 13. Proposed schemes vs. baseline schemes, under two different combinations of α and β .

in Section 7.2, under two different combinations of α and β : 1) $\alpha = 20$, $\beta = 20$, and 2) $\alpha = 30$, $\beta = 30$. As expected, the total communication cost of every investigated scheme is affected by α and β , i.e., under the same SMR, the total communication cost increases as α and β increase. However, regardless of the values of α and β , the trend remains the same, i.e., the proposed schemes perform significantly better than the baseline schemes, especially when SMR is small. This observation conforms to the result illustrated in Fig. 9.

As introduced in Section 6.3, we assume the square-grid mesh network model for WMNs and the random walk model for MCs. In order to investigate the effect of network coverage models on the performance of the proposed schemes, we switch to the hexagonal network coverage model as used in [5]. In the hexagonal network coverage model, the coverage area of each MR is called a cell, and each MR has six direct neighbors. An MC can move randomly from an MR to one of its direct neighbors with the same probability. Thus, $P_f = \frac{5}{6}$ and $P_b = \frac{1}{6}$, under the hexagonal network coverage model.

Fig. 14 plots the total communication cost incurred by the proposed schemes as a function of K , under different SMRs, assuming the hexagonal network coverage model. Comparing Fig. 6 and Fig. 14, it can be seen that cost curves shown in both figures exhibit high similarity in shape. Therefore, we can draw the conclusion that analytical results obtained are valid and are not sensitive to the network coverage model.

8 CONCLUSION

In this paper, we propose two mobility management schemes based on pointer forwarding for wireless mesh networks, namely the static anchor scheme and dynamic anchor scheme. The proposed schemes are per-user based, in that the optimal threshold of the forwarding chain length that minimizes the total communication cost is dynamically determined for each individual MC,

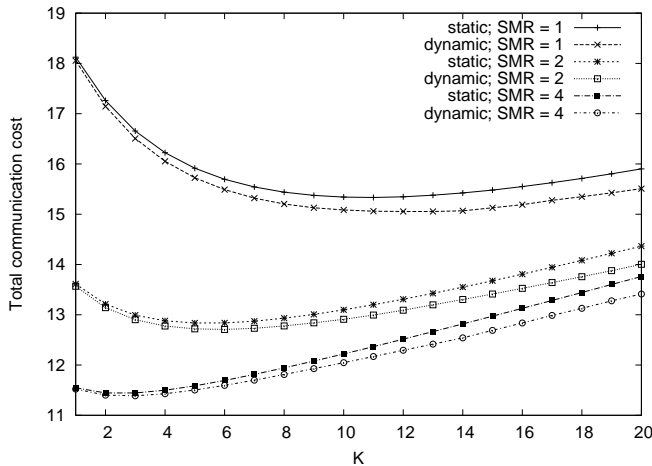


Fig. 14. Total communication cost vs. K , assuming the hexagonal network coverage model.

based on the MC's specific mobility and service patterns characterized by SMR.

We develop analytical models based on stochastic Petri nets to evaluate the performance of the proposed schemes. We also compare the proposed schemes with two baseline schemes and with the WMM scheme. Analytical results show that 1) the dynamic anchor scheme is better than the static anchor scheme in typical network traffic conditions, whereas the static anchor scheme is better when the service rate of an MC is comparatively high such that the advantage of the dynamic anchor scheme is offset by the extra cost; 2) our schemes perform significantly better than the baseline schemes, especially when SMR is small; 3) the dynamic anchor scheme is superior to the WMM scheme when the network traffic is dominated by mobile Internet applications characterized by large traffic asymmetry for which the downlink packet arrival rate is much higher than the uplink packet arrival rate.

In the future, we plan to investigate how our proposed schemes can be extended to WMNs that have multiple gateways. In addition, we plan to investigate the proposed schemes under more realistic mobility models other than the random walk model. We will also investigate how caching of location information of MCs can be used to reduce the signaling cost incurred by our proposed schemes.

REFERENCES

- [1] Ian F. Akyildiz, Xudong Wang, Weilin Wang, "Wireless mesh networks: a survey," *Computer Networks*, vol. 47, no. 4, pp. 445–487, Mar. 2005.
- [2] A. Raniwala and T. cker Chiueh, "Architecture and algorithms for an ieee 802.11-based multi-channel wireless mesh network," *Proc. 24th Annual IEEE Conference on Computer Communications (INFOCOM '05)*, vol. 3, pp. 2223–2234, Mar. 2005.
- [3] I. Akyildiz, J. McNair, J. Ho, H. Uzunalioglu, and W. Wang, "Mobility management in next-generation wireless systems," *Proceedings of the IEEE*, vol. 87, no. 8, pp. 1347–1384, 1999.
- [4] I. Akyildiz, J. Xie, and S. Mohanty, "A survey of mobility management in next-generation all-IP-based wireless systems," *IEEE Wireless Communications*, vol. 11, no. 4, pp. 16–28, 2004.

- [5] D. Huang, P. Lin, and C. Gan, "Design and performance study for a mobility management mechanism (WMM) using location cache for wireless mesh networks," *IEEE Transactions on Mobile Computing*, vol. 7, no. 5, pp. 546–556, 2008.
- [6] A. Boukerche and Z. Zhang, "A hybrid-routing based intra-domain mobility management scheme for wireless mesh networks," *Proc. 11th International Symposium on Modeling, Analysis and Simulation of Wireless and Mobile Systems (MSWiM '08)*, pp. 268–275, Oct. 2008.
- [7] H. Wang, Q. Huang, Y. Xia, Y. Wu, and Y. Yuan, "A Network-Based local mobility management scheme for wireless mesh networks," *Proc. IEEE Wireless Communications and Networking Conference (WCNC '07)*, pp. 3792–3797, Mar. 2007.
- [8] R. Huang, C. Zhang, and Y. Fang, "A mobility management scheme for wireless mesh networks," *Proc. 50th IEEE Global Telecommunications Conference (GLOBECOM '07)*, pp. 5092–5096, Nov. 2007.
- [9] V. Navda, A. Kashyap, and S. Das, "Design and evaluation of imesh: an infrastructure-mode wireless mesh network," *Proc. 6th IEEE International Symposium on a World of Wireless Mobile and Multimedia Networks (WoWMoM '05)*, pp. 164–170, Jun. 2005.
- [10] M. Ren, C. Liu, H. Zhao, T. Zhao, and W. Yan, "MEMO: an applied wireless mesh network with client support and mobility management," *Proc. 50th IEEE Global Telecommunications Conference (GLOBECOM '07)*, pp. 5075–5079, Nov. 2007.
- [11] Y. Amir, C. Danilov, M. Hilsdale, R. Musaloiu-Elefteri, and N. Rivera, "Fast handoff for seamless wireless mesh networks," *Proc. 4th International Conference on Mobile Systems, Applications and Services (MobiSys '06)*, pp. 83–95, Jun. 2006.
- [12] R. Jain and Y. Lin, "An auxiliary user location strategy employing forwarding pointers to reduce network impacts of PCS," *Wireless Networks*, vol. 1, no. 2, pp. 197–210, 1995.
- [13] N. Nandiraju, L. Santhanam, B. He, J. Wang, and D. Agrawal, "Wireless mesh networks: Current challenges and future directions of Web-In-The-Sky," *IEEE Wireless Communications*, vol. 14, no. 4, pp. 79–89, 2007.
- [14] J. Robinson and E. Knightly, "A performance study of deployment factors in wireless mesh networks," *Proc. 26th Annual IEEE Conference on Computer Communications (INFOCOM '07)*, pp. 2054–2062, May 2007.
- [15] Ian F. Akyildiz, Yi-Bing Lin, Wei-Ru Lai, Rong-Jaye Chen, "A new random walk model for PCS networks," *IEEE Journal on Selected Areas in Communications*, vol. 18, no. 7, pp. 1254–1260, Jul 2000.
- [16] C. Hirel, B. Tuffin, and K. S. Trivedi, "Spnp: Stochastic petri nets. version 6.0," *Proc. 11th International Conference on Computer Performance Evaluation: Modelling Techniques and Tools*, pp. 354–357, Mar. 2000.
- [17] A. Campbell, J. Gomez, S. Kim, A. Valko, C. Wan, and Z. Turanyi, "Design, implementation, and evaluation of cellular IP," *IEEE Personal Communications*, vol. 7, no. 4, pp. 42–49, 2000.
- [18] R. Ramjee, T. L. Porta, S. Thuel, K. Varadhan, and S. Wang, "HAWAII: a domain-based approach for supporting mobility in wide-area wireless networks," *Proc. 7th International Conference on Network Protocols (ICNP '99)*, pp. 283–292, 1999.
- [19] H. Lim and C. Kim, "Flooding in wireless ad hoc networks," *Computer Communications*, vol. 24, no. 3-4, pp. 353 – 363, 2001.
- [20] S.-Y. Ni, Y.-C. Tseng, Y.-S. Chen, and J.-P. Sheu, "The broadcast storm problem in a mobile ad hoc network," *Proc. 5th Annual ACM/IEEE International Conference on Mobile computing and Networking (MobiCom '99)*, pp. 151–162, Aug. 1999.
- [21] D. G. Jeong and W. S. Jeon, "Cdma/tdd system for wireless multimedia services with traffic unbalance between uplink and downlink," *IEEE Journal on Selected Areas in Communications*, vol. 17, no. 5, pp. 939–946, May 1999.
- [22] W. S. Jeon and D. G. Jeong, "Call admission control for mobile multimedia communications with traffic asymmetry between uplink and downlink," *IEEE Transactions on Vehicular Technology*, vol. 50, no. 1, pp. 59–66, Jan. 2001.
- [23] I. Sohn, B. O. Lee, and K. B. Lee, "Balancing Uplink and Downlink under Asymmetric Traffic Environments Using Distributed Receive Antennas," *IEICE Transactions on Communications*, vol. E91-B, no. 10, pp. 3141–3148, 2008.