

# From Landscapes to Waterscapes: A PSE for Landuse Change Analysis

E.J. Rubin, R. Dietz, J. Chanat, C. Speir,  
R. Dymond, V. Lohani, D. Kibler, D. Bosch,  
C.A. Shaffer, N. Ramakrishnan, and L.T. Watson  
Virginia Polytechnic Institute and State University,  
Blacksburg, VA 24061

## **Abstract**

We describe the design and implementation of L2W - a problem solving environment (PSE) for landuse change analysis. L2W organizes and unifies the diverse collection of software typically associated with ecosystem models (hydrological, economic, and biological). It provides a web-based interface for potential watershed managers and other users to explore meaningful alternative land development and management scenarios and view their hydrological, ecological, and economic impacts. A prototype implementation for the Upper Roanoke River Watershed in Southwest Virginia, USA is described.

## **Contents**

<b>1</b>	<b>Introduction</b>	<b>1</b>
<b>2</b>	<b>Problem Solving Environments</b>	<b>1</b>
2.1	Design Features . . . . .	2
2.2	Available Technologies . . . . .	4
<b>3</b>	<b>Design of the L2W System</b>	<b>7</b>
3.1	Related Research . . . . .	7
3.2	System Architecture and Implementation . . . . .	9
3.3	Models, Codes, and Software . . . . .	10
<b>4</b>	<b>Experimental Studies</b>	<b>12</b>
<b>5</b>	<b>Concluding Remarks</b>	<b>19</b>

## 1 Introduction

Effective watershed management requires that decision-makers receive input about, and balance consideration of, a number of competing factors. The fundamental drivers of change are modifications to landuse and settlement patterns. These changes affect surface and ground waterflows, water quality, wildlife habitat, economic value of the land and infrastructure (directly due to the change itself such as building a housing development, and indirectly due to the effects of the change, such as increased flooding), and cause economic effects on municipalities (taxes raised versus services provided).

To model the effects of landuse and settlement changes properly requires, at a minimum, the ability to model and integrate codes related to surface and subsurface hydrology, economics, and biology. The emerging discipline of problem solving environments (PSEs) [29] seeks to combine such discipline-specific software tools into integrated systems for decision-making and problem solving. PSEs free the computational scientist from managing individual software components and enable the specification of parameters of the problem at a high level (in the vernacular of the domain), rather than in terms of low-level modeling subsystems or software. PSEs then integrate results of the submodels into coherent, visual feedback suitable for high-level comprehension. Finally, PSEs are meant to be used by people who have diverse backgrounds and levels of expertise, and who are certain not to be experts in all of the domains that are modeled.

This paper presents the design and implementation of L2W — a PSE for landuse change analysis. L2W organizes and unifies the diverse collection of software typically associated with ecosystem models (hydrological, economic, and biological). It provides a web-based interface for potential watershed managers and other users to explore meaningful alternative land development and management scenarios and view their hydrological, ecological, and economic impacts.

### Organization of the Paper

Section 2 outlines various design principles of PSEs, with specific reference to watershed assessment. The current state-of-the-art in implementation technologies for PSEs is also presented here. Section 3 presents the design architecture of the L2W PSE. It outlines the various models considered in this study. Usability and performance considerations are outlined, and comparisons to other systems are presented. Section 4 describes experimental results from a prototype implementation of the L2W PSE for the Upper Roanoke River Watershed in Southwest Virginia, USA. It also emphasizes the configuration and tuning of the models presented earlier. Section 5 provides various avenues for extending the capability of L2W.

## 2 Problem Solving Environments

PSEs were originally introduced in domains such as partial differential equations (PDEs) [39, 63] and linear algebra [30] where they provided high-level programmatic interfaces to widely used software libraries [29, 64]. With rapid advances in high performance computing, GIS, software interfaces, computational intelligence, and networking, interest in PSEs has virtually exploded. Diverse applications in wood-based composite design [33], aircraft design

[32], gas turbine dynamics [22], and wireless communications [26] are now being viewed in the PSE framework. While these projects concentrate on developing domain-specific PSEs, considerable attention has also been devoted to developing generic tools for building PSEs. The software engineering of customizable architectures, leveraging the Web, supporting distributed, collaborative problem solving, and providing *middleware* constitute some of the enabling technologies.

The focus of this paper is a PSE for landuse change analysis; while there is no doubt that the need exists for better models for all aspects of watershed assessment, including hydrology (flooding and erosion effects), biology (effects of contaminants and population changes), and economics (valuations resulting from landuse changes and surrounding environment, economic effects on governments), the synergy resulting from integrating them in a PSE will help leverage them in ways that best benefit planners and other observers. We identify a number of distinct aspects that should be part of a full-fledged PSE for watershed management, along with rationale for the desirability of each point.

## 2.1 Design Features

### Internet Access to Legacy Codes

Rather than create new simulations, PSEs can be more effective in modeling the effects of landuse change by integrating existing packages and software. This is the approach taken, for example, by GenScn (GENeration and analysis of model simulation SceNarios) [46], which provides a more effective user interface to the HSPF hydrology modeling code [9]. The next, crucial step is to link various models together, possibly via the Internet. This avoids platform dependency issues and users are not required to install the system on a compatible platform. Perhaps more importantly, by using a network-based approach, it is not even necessary that all of the models reside/run on the same platform and PSEs can be envisioned as providing network-based ‘software services’ [14, 51].

### Interactive Visualization

Users of a PSE typically wish to visualize the output, rather than process raw data output by the models. Such visualization processes should be integrated seamlessly with the computational pipeline by the PSE. An important aspect of such integration relates to inlined simulation and visualization tasks. It can be argued that if one can identify specific processes (and/or subdomains) that are interesting, then computational resources could be steered towards these processes, while supporting other simulation tasks only in so far as to maintain the fidelity of the interesting phenomena. This concept of *computational steering* [56] plays an important role in reducing the overhead associated with large-scale simulations.

### Scenario and Experiment Management

PSEs should encourage users to experiment with various management options or scenarios. Such scenarios should be at a cognitive level relevant to the user, *i.e.* typically higher than the raw input demanded by the model. As each scenario is evaluated, the results can be recorded in a database for later retrieval, and for automated comparison to other scenarios. It is not uncommon for a typical user to run a model several times, with various

combinations of input parameters, to generate output that meets some performance criteria. In some cases, users may conduct hundreds of experiments. Recording scenarios can thus aid in experiment management [43], parameter tuning, and automated optimization. In the context of watershed assessment, scenario management in PSEs is intricately coupled to GIS support for physically-based models. In addition, having the ability to perform *data mining* [59, 60] with respect to desired characteristics provides powerful analysis capabilities for what-if scenarios.

### **Multidisciplinary Support and Usage Documentation**

Since the collection of models comprising a watershed assessment system are likely to be multidisciplinary in nature, a PSE must provide support to users who will not be expert in every (or any) aspect of the domain. This most likely will require alternate interfaces to different aspects of the modeling subsystems to reflect various levels of expertise. Typically, expert users desire more detailed control of models while novice users will wish to control only the coarse details, and need the maximum amount of guidance on reasonable setting(s) for models. The simulation interface could provide recommendations on reasonable interactions of parameters, or on which submodels to use in particular circumstances. Such advisory support regarding parameters is an integral aspect for the practical utility of PSEs.

### **Recommender Systems**

A full-fledged PSE will likely provide a rich collection of simulations for modeling various aspects of the problem. Unfortunately, the multitude of choices available can bewilder novice users. Recommender systems for PSEs [61] serve as intelligent front-ends and guide the user from a high level description of the problem through every stage of the solution process, providing recommendations at each step.

### **Collaboration Support**

Decision makers often would like to either communicate their rationale to others, or work collaboratively with others during the planning process. While the ability to save and restore prior results can be used to provide asynchronous collaboration, ideally a PSE would allow multiple users at multiple sites to work together collaboratively and interactively. For instance, one user can create a scenario and display the results to others who can perform further analyses. Alternatively, two or more users can jointly set up scenarios. Together with component-based architectures, collaborative systems help realize the paradigm of ‘programming-in-the-large,’ where powerful programming abstractions harness widespread computing resources in an intuitive and transparent manner.

### **Optimization**

Selecting a “best” configuration to balance competing goals within a watershed can be cast as an optimization problem. A given run of a model is typically an evaluation at a single point in a multi-dimensional space. In essence, the goal is to supply to the model that vector of parameters that yields the best result under some figure of merit. As such, decision-making processes can often be improved by applying automated optimization techniques, rather

than have someone manually try a large number of parameter sets. Automated optimization techniques are quite sophisticated today, and are woefully underutilized by decision support systems in many disciplines, including watershed management.

### **High Performance Computing**

Many of the models used in watershed assessment require significant computing resources, such as a parallel supercomputer or an ‘information grid.’ PSEs can incorporate a computing resource management subsystem [35] such as Globus [27] or Legion [36], and hide the details of accessing the necessary computational resources from the user.

### **Preservation of Expert Knowledge**

Like books in libraries, programs codify and preserve expert knowledge about the application domain. By using and preserving legacy code, the expert knowledge embodied in the legacy codes is (indirectly) employed by the PSE. Yet, state-of-the-art codes in their native form are nearly impossible for nonexperts to use productively. By providing advice, either from knowledge culled from experts or by automatic inference and mining, PSEs can make legacy codes and knowledge more usable by nonexperts.

### **Pedagogical Uses**

PSEs in domains such as watershed assessment can also help to improve education in all of the related disciplines. Students in environmental and civil engineering can more easily be made aware of biological and economic issues, and likewise biologists and economists can acquire sensitivity regarding issues in the other disciplines. In addition, the general public gets heavily involved in controversial zoning and planning decisions. Using PSEs, citizens could go online and learn various aspects involved in resource management decisions. They could evaluate for themselves the rationale for planning choices made in particular projects. Ultimately, a better understanding of the complex issues involved will benefit all parties.

## **2.2 Available Technologies**

A comparative evaluation of various integrated systems for watershed assessment with respect to the above aspects is provided in Table. 1. Descriptions of these systems are provided later in the paper. We now describe the present state of various software technologies that help to realize these different aspects.

The key need is the ability to link together multiple models, and provide access to the aggregate via the Internet. Fortunately, the techniques for doing this are becoming well understood. ‘Middleware’ refers to software that mediates between a user interface (usually provided via a Web browser) and back-end database(s) and/or simulation(s), routes queries, performs information integration, and supports distributed problem solving. Many systems in use everyday by millions of people are based on the middleware model. Typically, scripting languages such as Perl are used to access the models and visualization tools, wherein a Web server accepts commands from the user interface to drive the scripts. Custom Java applets can be used for the front-end interface(s).

	WARMF	WATERSHEDSS	BASINS	AQUATOOL	GenScn	LUCAS	MM	L2W
Internet Access to Legacy Codes								●
Parallel Computing					●	●		●
Decision Support	●	●	●	●	●	●		●
Computation Steering					⊗		⊗	
Scenario Management		●			●		●	○
Multidisciplinary Support	●	●	⊗			⊗	⊗	●
Collaboration Support								○
Recommender Systems								○
GIS Support	●		●	●	●	●		●
Site-Specific Prediction					●			●
Optimization								○
Incorporates Prior Knowledge						●		⊗

Table 1: Comparative tabulation of features of PSEs and decision support systems for watershed assessment. Caption guideline: ● – feature present; ○ – feature under development; ⊗ – partial support for feature available.

One tool that we have found to be particularly useful for developing watershed management PSEs is MapObjects from ESRI [23]. The purpose of MapObjects is to provide a Web-based interface to ESRI’s ARC/INFO product, which is already familiar to many watershed planners. It provides the ability to call user-defined functions, which in turn can access Perl scripts to drive outside models and visualization tools.

Another alternative is to develop component-based software using, for example, Sun’s JavaBeans technology. The goal of JavaBeans is to allow developers to make reusable software components to simplify program development. However, JavaBeans can also be used to develop systems where the ‘beans’ are surrogates for various distributed tools that can be linked together in various ways. Thus, we can envision a system that allows the user to select one or more modeling tools, link them together, and then in turn link the output to the user’s choice of visualization tool. Once again, middleware acts as the intermediary between the various components, addressing data formatting and transfer issues.

The technologies just described for linking together distributed components are now well understood, and currently being used in various PSEs. Somewhat more speculative is technology for supporting synchronous collaboration. The success of Microsoft’s NetMeeting demonstrates that collaborative systems are now reaching the level of limited commercial success. NetMeeting is rather limited in its capabilities, but it is the first practical collaborative system that is widely used by typical users. The research field known as computer supported cooperative work (CSCW) is pushing forward on more advanced collaborative systems. Once again, Sun’s Java technology provides reasonable possibilities for practical collaborative systems in the near future.

Large-scale simulations can require massive amounts of computing power. A plausible alternative to making super-computer class equipment available to local government planners is to harness the computing power that normally goes untapped in desktop computers. Recently, the SETI@home project (Search for Extraterrestrial Intelligence [3]) gained prominence due, in large part, to its ingenious approach to harnessing the large computational

resources of the Internet to search for patterns and anomalies indicating extraterrestrial intelligence. A number of efforts are underway to create a computing ‘power grid.’ The Information Power Grid [28] (IPG) being envisioned by NASA and the national laboratories is a general, all-encompassing PSE. While some of the requisite technologies are in place (e.g., Globus [27] for distributed resource management, and PETSc [6, 37] for a scientific software library), it is unclear how the remaining components can be built and integrated. At this time, IPG is a vision rather than a working prototype.

As the number of algorithms and models made available to the computational scientist increases, there is a concomitant need to support the knowledge-based selection of solution components. This requirement is addressed by recommender systems, introduced earlier. Recommender systems are typically designed by organizing a battery of benchmark problems and algorithm/model executions, and subsequently mining it to obtain high-level rules that can form the basis of a recommendation.

Such data mining thus constitutes a key computational technology, supporting traditional analysis, visualization, and design tasks [62]. The reader will be familiar with the beers-diapers discovery in commercial market basket analysis (‘People who buy diapers in the afternoon are more likely to buy beer too’) [2], but the role of data mining in computational science is a larger and more complicated application. Like most of PSE work, recommender systems research has concentrated on both (i) creating reusable knowledge-bases for specific domains, and (ii) designing software architectures for the rapid prototyping of recommender systems. The PYTHIA kernel, described in [40], provides a database infrastructure for problem and method definition, experiment management, performance data analysis, and automatic mining of recommendation spaces. Its generic design permits applications to structured domains such as PDEs, numerical quadrature as well as to more amorphous domains, such as watershed management. PYTHIA is built using the Postgres object-relational database system (for storage, retrieval, and management), Tcl/Tk (for interfaces and scripting), statistical software in C (for performance analysis), PROGOL (an induction package for data mining), and CLIPS (a production system shell for making recommendations).

Recommender systems thus contribute directly to automated decision making and also have pedagogical uses in providing phenomenological explanations of their choices and selections. The recently concluded NSF SIDEKIC Workshop on PSEs underscores the importance of recommender systems in several key applications [15].

Once recommendations for models are configured, such choices and selections can be optimized to achieve user-defined objectives. Multidisciplinary and multiple-objective optimization is a well-understood area of technology, and can thus be deployed immediately in the context of watershed management. In multidisciplinary optimization [12, 65, 66], a large system comprising several disciplinary components (e.g., hydrology, hydraulics, economics, biology) is optimized in parallel, by optimizing the subsystems concurrently using for each subsystem a detailed model in one discipline and approximate models for the other disciplines. There are several known successful strategies for managing the parallel optimizations and ensuring convergence [58].

Multicriteria optimization is typical in land use management, where there are contradictory goals for the involved stakeholders. The approach is to find pareto optima, similar to game equilibria, where no one participant can unilaterally improve their position. Giving planners and managers a family of such optima permits them to consider a range of tradeoffs. Again, well understood theory and algorithms exist for multicriteria optimization that could



be immediately deployed in land use management systems.

Those parts of optimization theory best known outside the mathematical sciences—linear programming and derivative based algorithms—are perhaps the least useful in this context. There are direct search [44] and simplicial pattern search [49] algorithms that only require candidate points to be ranked; these methods coupled with statistical response surface methodology [31] can be very effective for the type of problems with sparse and noisy data encountered in landuse models. There is certainly research work to be done on improved optimization techniques, but standard tools could be integrated with existing models quite quickly.

## 3 Design of the L2W System

### 3.1 Related Research

PSEs for watershed management are typically centered on physically-based conceptual models which delineate a watershed into multiple classifications based on landuse and drainage connectivity. The primary systems available for hydrological modeling are the commandline program HSPF (Hydrological Simulation Program in FORTRAN) [9] and the GenScn PSE (GENeration and analysis of model simulation SceNarios) [46] that implements a graphical user interface over HSPF, making it easier to enter necessary data and parameters to drive the HSPF model. GenScn is meant to help the user in analyzing various what-if scenarios in a watershed involving landuse change, landuse management practices, and water management operations. Such scenarios involve analyzing and managing high volumes of input and output data and hence follow a difficult process. GenScn helps in this process by creating simulation scenarios, analyzing results of the scenarios, and comparing scenarios. The GUI uses standard Windows 9x/NT components and MapObjects LT from Environmental Systems Research Institute, Inc. (ESRI). The model outputs include interactive and batch graphical and tabular displays of both observed and simulated data.

An example of an integrated system is the LUCAS (Land Use Change Analysis System) PSE [8], designed on a Markov probabilistic model that attempts to capture the influence of market economics (ownership characteristics), transportation networks (access and routing costs), human institutions (population density), and ecological behavior on landscape properties. The primary motivation is thus, socioeconomic modeling and LUCAS uses a transition matrix to assess random spatial variations in landuse which, in turn, are used for assessing the expected impact of a given set of factors. LUCAS has an advanced GUI for displaying landuse scenarios and habitat changes, based on the public domain Geographic Resources Analysis Support System (GRASS) GIS from the U. S. Army Construction Engineering Research Laboratories [68]. The Markov models used are derived from time series data and expert opinion, and thus predictions must come from averaging many simulation runs. Currently only a small number of economic factors are considered, and biological effects are only inferred from (probabilistic) habitat changes.

The modeling philosophy of L2W is quite different from that of LUCAS. L2W uses physics based models (partial differential equations) to model surface water runoff, subsurface flow, stream flow, stream bank erosion, sedimentation, and pollutant transport. L2W has a complicated economic model including roads, taxes, water and sewer infrastructure, and numerous zoning and developmental models. Biological field data is used to directly

predict the biological impact (on both plants and animals) of landuse changes (residential or industrial development). L2W is site specific in its predictions (e.g., flooding or the disappearance of a particular species at a given location), rather than global and probabilistic as LUCAS, which is based solely on Markov transition matrices for landscape changes. Currently, LUCAS is superior in its GIS based display of predictions, and LUCAS can more easily incorporate expert opinion and known isolated facts than the physics based L2W. Systems such as L2W (akin to climate modeling) have the advantage of high resolution and detailed prediction, but the matching burden of obtaining initial and boundary conditions, and physical constants (e.g., soil permeability for subsurface flow).

Various other PSE-like products have been proposed in the water resources and geographical engineering communities. AQUATOOL [4], a system for water resources planning and operational management, is composed of modules linked through geographically referenced databases and knowledge bases. These modules are designed to model water resources schemes optimization, carry out simulation of management of water resources systems including conjunctive use of surface and ground water, and preprocess a groundwater model designed to include distributed aquifer submodels in the simulation model. BASINS [73], released by the EPA, supports environmental and ecological analysis on a watershed basis through use of models and a GIS. Osmand et al. developed a decision support system (DSS) called WATERSHEDSS [55] to aid watershed managers in handling water quality problems in agricultural watersheds. The key objectives of this DSS are to transfer information to watershed managers for making appropriate land management decisions, to assess nonpoint-source pollution in a watershed based on user supplied information and decisions, and to evaluate water quality effects of alternative land treatment scenarios. WaterWare, a river basin planning DSS [25], also uses modules linked to a GIS. Lal et al. [48] and Negahban et al. [54] describe a DSS named LOADSS that is designed to evaluate phosphorus loading and control in the Lake Okeechobee basin through the use of GIS linked modules. The WISE environment [47] lets researchers link models of ecosystems from various sub-disciplines. Chen et al. [17] present the design of the watershed analysis risk management framework (WARMF) for calculation of the total maximum daily loads (TMDLs) of various pollutants within a river basin. WARMF contains five integrated modules—Engineering, TMDL, Consensus, Data, and Knowledge. A GUI that provides menus for the user to issue commands, store, and display the output in the forms of GIS maps, bar charts, and spreadsheets helps to integrate these modules. While most of these systems provide sophisticated models and link appropriate simulation codes using a GIS, none are web-accessible to the best of our knowledge. Also, the availability of a PSE explicitly focusing on evaluating hydrologic and economic impacts of residential settlement patterns is limited. Most systems are somewhat restrictive in their scope and do not provide a truly multidisciplinary assessment of management changes in watersheds.

The Market Manager (MM) model of Carpenter et al. [13] takes an agent-based and dynamical system approach to modeling socioecological systems. The entire (dynamical) system can have stable or unstable equilibria, and the actions of the various stakeholders (agents) drive the system toward an equilibrium, a periodic solution, or even toward chaos. The agents have only incomplete, local information, and no small group of agents can learn and control the total system. The authors consciously avoid cost-benefit optimization, fully intending the model to be metaphorical, i.e., illustrating general patterns of system behavior rather than making specific predictions. A notable observation from the work is that stable

ecological systems can have intrinsic oscillations, and intervention failing to recognize this can be worse (drive the total socioecological system away from desirable solutions) than doing nothing.

Thus Market Manager is quite dissimilar from L2W, being metaphorical, dynamical system (ordinary differential equation) based, and only mildly multidisciplinary, rather than (as L2W) predictive, physics (PDE) based, and strongly multidisciplinary. See Table 1 for a detailed comparison of these various systems.

### 3.2 System Architecture and Implementation

The architecture of the L2W PSE is based on leveraging existing software tools for hydrology, economic, and biological models into one integrated system. Geographic information system (GIS) data and techniques merge both the hydrologic and economic models with an intuitive web-based user interface. Incorporation of the GIS techniques into the PSE produces a more realistic, site-specific application where a user can create a landuse change scenario based on local spatial characteristics. Design of the PSE/GIS follows the model developed by Fedra [24] and Goodchild [34] in which one user interface interacts with the GIS and the models employed by the application. Another advantage of using a GIS with the PSE, as described by [50], is that the GIS can obtain necessary parameters for hydrologic and other modeling processes through analysis of terrain, land cover, and other features.

As described earlier, the surface hydrology model used is the HSPF V11.0 system [9] that incorporates a watershed scale ARM (Agricultural Runoff Management Model) and NPS (Nonpoint Source Pollutant Loading Model) models into a basin-scale framework. HSPF models hydrological processes mathematically as flows and storages and uses a spatially lumped model for each *subarea* for a watershed (referred to as a subwatershed). In contrast, fully distributed, physically based models use a gridded rectangular cell as the building block and attempt to provide greater resolution in the modeling process. However, this enhancement in modeling power is not accompanied by corresponding spatial detail in the various input data sources (e.g. precipitation) and hence does not necessarily translate into improved hydrological forecasts. Furthermore, HSPF poses no topographic limits on the size of the subareas, is capable of modeling the hydrological processes on a continual basis, and supports the analysis of various scenarios where the user changes land use.

The hydrologist's interface to HSPF that we provide allows users to specify the percentage of basic landuse types to be applied within specified subwatersheds, which are selected from a map. These percentage figures reflect introduction of various land settlement patterns in a subwatershed. Landuse changes are also provided to the economic model for analysis of economic impacts. The back-end prototype is written as a Visual BASIC application (chosen because it supports the MapObjects system) and the simulations for watershed runoff are accessed via Perl scripts wrapped around HSPF. Postprocessing tools are provided by Matlab and operating system utilities. MapObjects' programming interfaces that allow implementors to add map features and other GIS functions quickly without writing a lot of code in-house aids in the specification of spatial input. By combining HSPF, Matlab, and MapObjects into one integrated system, we provide a way for the user to experiment with various hydrologic scenarios within the watershed.

The economic model estimates the effects of residential developments on water and sewer costs, property values, property tax base, and property tax revenues. Length of pipe, num-

ber of valves, hydrants and manholes, number of booster pumps and pump energy, and maintenance requirements are determined according to the layout of each development and its location relative to existing water and sewer lines. These infrastructure requirements are used in conjunction with unit cost data from generally accepted industry sources to calculate total costs. We now describe these models in more detail.

### 3.3 Models, Codes, and Software

#### HSPF: Model Structure

HSPF was developed in the late 1970's as a union between the Stanford Watershed Model [18] and several water quality models developed by the USEPA. The USEPA and USGS agencies have since been involved in the development and maintenance of HSPF, which has witnessed over 150 applications in the country and abroad [21]. The model contains three application modules and five utility modules. The application modules, representing the hydrologic/hydraulic processes, are referred to as PERLND, IMPLND, and RCHRES. The PERLND module simulates runoff and water quality constituents from pervious land areas in the watershed and is the most frequently used part of the model. The IMPLND module simulates impervious land area runoff and water quality. The movement of runoff water and its associated water quality constituents in stream channels and mixed reservoirs are modeled by the RCHRES module. The utility modules perform operations involving time series which are essentially auxiliary to application modules, e.g., input time series data from ASCII files to the WDM file using COPY, multiplying two time series etc.

#### HSPF: PERLND

The application modules are divided into several distinct sections, each of which may be selectively activated in a given simulation by the user. The PERLND module contains 12 sections, the first for correcting air temperature for elevation difference (ATEMP) and the last for simulating the movement of a tracer (TRACER). The key section of the PERLND module is called PWATER which is used to calculate the water budget components resulting from precipitation on the pervious land segments. PWATER models processes such as evapotranspiration, surface detention, surface runoff, infiltration, interflow, baseflow, and percolation to deep groundwater using both physical and empirical formulations.

The PWATER section requires precipitation and potential evapotranspiration time series' for performing water balance computations. When snow accumulation and melt are considered, additional information on air temperature, snow cover, ice content of the snowpack etc. are required. The time series of precipitation representing moisture supplied to the land segment is first subjected to interception losses. Typically on pervious areas, the interception capacity represents storage on grass blades, leaves, branches, trunks, and stems of vegetation. It can either be supplied on a monthly basis or as one single value. Water held in interception storage is removed by evaporation. Moisture exceeding the interception capacity overflows the storage and becomes available for either infiltration or runoff. The infiltration rate is modeled as a function of time and is related to the soil moisture content based on the work of Philip [57].

Spatial variation in infiltration rate is considered using a linear probability distribution. For each time step, the available depth of water is divided between infiltrated depth and

potential direct runoff (PDRO). The PDRO either enters the upper zone storage or becomes available for either interflow or overland flow. The fraction of PDRO that goes to the upper zone storage is dictated by the ratio of storage in upper zone and its nominal capacity. The overland flow is simulated using the Chezy-Manning equation and an empirical expression that relates outflow depth to detention storage. The overland flow computations require Manning's roughness, slope, and length of flow plane. The Manning's roughness can be input on monthly basis to allow for surface roughness variations over the year. The rate of interflow is assumed as a linear function of interflow storage. An interflow recession parameter is used in interflow computation that is taken as ratio of present rate of interflow outflow to the value 24 hours earlier. This parameter can be given monthly values to allow for variation in soil properties. The inflow computed for the upper zone storage gets added to the existing storage and depending on the status of storages in upper and lower zones, percolation of water takes place from upper storage to the lower storage. An empirical relationship is used to compute the fraction of infiltration and percolation entering the lower zone storage. The amount entering the lower zone storage is dictated by the ratio of lower zone storage and the nominal capacity of lower zone that is one of the model parameters and can be input on monthly basis to allow for annual variation. The fraction of the moisture supply remaining after the surface, upper zone, and lower zone components are subtracted is added to the groundwater storages. The flow to groundwater is split between active and inactive groundwater storage. This split is based on a user supplied parameter. The groundwater outflow takes place from the active storage based on a relationship that involve cross sectional area and energy gradient of the flow.

The model requires time series of potential ET. This can be developed using the data of Class A pan or by using various empirical relationships for estimating PET. The input time series of PET is compared to the available water on the watershed during each time step and the flux of actual evapotranspiration is calculated from five sources in the following order. The first source of meeting ET demand is the baseflow or groundwater outflow. The fraction of total PET met by this source is dictated by a user supplied parameter. The remaining PET comes from interception storage which is depleted until the PET is met or until there is no more water in interception storage. The next source of meeting PET is the upper zone storage. The contribution of this storage is controlled by the ratio of upper zone storage to the nominal value of upper zone storage. PET not satisfied from the above storages is met from active ground water storage and is controlled by a user supplied parameter. The lower zone is the last storage from which ET is drawn and the amount withdrawn is based on a user supplied parameter that can have monthly values to reflect vegetation density, rooting depth, density of vegetation, and stage of plant growth.

### **HSPF: IMPLND and RCHRES**

In a land segment modeled as IMPLND, no infiltration occurs and only land surface processes are modeled. Many of the sections of the IMPLND module are similar to corresponding sections in PERLND module. In fact, IMPLND sections are simpler because infiltration and sub-surface flows are not considered. The flow in a RCHRES is assumed unidirectional. Inflow to a RCHRES comes from upstream RCHRESs, overland flow, diversions and enter through a single gate. The volume of RCHRES is updated and the downstream discharge is computed from the volume-discharge relationship specified at the downstream end. Tables of

volume-discharge relationships for each RCHRES thus form part of the input file. Outflows may leave the RCHRES through one or several gates or exits.

### Economic Model

The economic model estimates the effects of residential developments on property values, property tax base, property tax revenues, and water and sewer costs. The user can place any combination of four development tract forms within the subwatershed—low density, mid density conventional, mid density cluster, and high density [5, 67, 70]. Property values are estimated as the sum of bare land values and estimated construction costs for housing and infrastructure. In reality, the value of a development is jointly determined by the supply of housing and the demand by potential home buyers in an area. However, developers should expect housing sales to cover their costs over the long term, otherwise they would not invest in developments. If sales revenues exceed costs by a large margin, more developers will invest in housing developments causing housing supplies to increase and driving housing prices down.

Bare land values are statistically estimated using land values based on land transactions from sources such as the Roanoke County Division of Planning and Division of Tax and Assessment’s database [45]. Housing construction costs are estimated from secondary sources [42, 69]. Costs to link sewer and water systems from the edge of the development to the central water or sewage treatment system are assumed to be borne by the local government. The unit cost of water transmission mains is determined by the sum of the costs per meter of pipe (materials, labor and equipment), excavation, trench bedding, fire hydrants, and valves [41].

## 4 Experimental Studies

### Example Scenario

An initial prototype of our system is available at the URL <http://landscapes.ce.vt.edu> and covers the 57 square-mile Back Creek subwatershed of the Upper Roanoke River watershed (see Fig. 1) in Southwest Virginia, USA. Typically, the user invokes the thin-client Java applet (see Fig. 2) depicting the Back Creek subwatershed and uses the cursor to specify landuse distributions for individual land segments. By selecting the “hydrology expert” interface (see Fig. 3) over the “decision maker” interface in Fig. 2, hydrologists can use an HSPF input file that they have created, allowing more control when greater expertise is available. The cursor locations are converted and communicated via messages to a server, where each individual message contains details of the coordinates on the map (where clicked), parameters for running a simulation, or a command to indicate a particular simulation. Using MapObjects on the  $600m^2$  per pixel grid helps us provide map layer functions, automatic drawing of the map on the server, and transmission of maps across the internet. In particular, MapObjects provides primitives for intercepting coordinates of clicks on the map in the applet. Based on the user input, L2W calculates the new distribution of landuses, suitable for input to HSPF, which is then run on one “base” rainfall pattern for a pre-selected duration.

### Land Cover for the Watershed Area

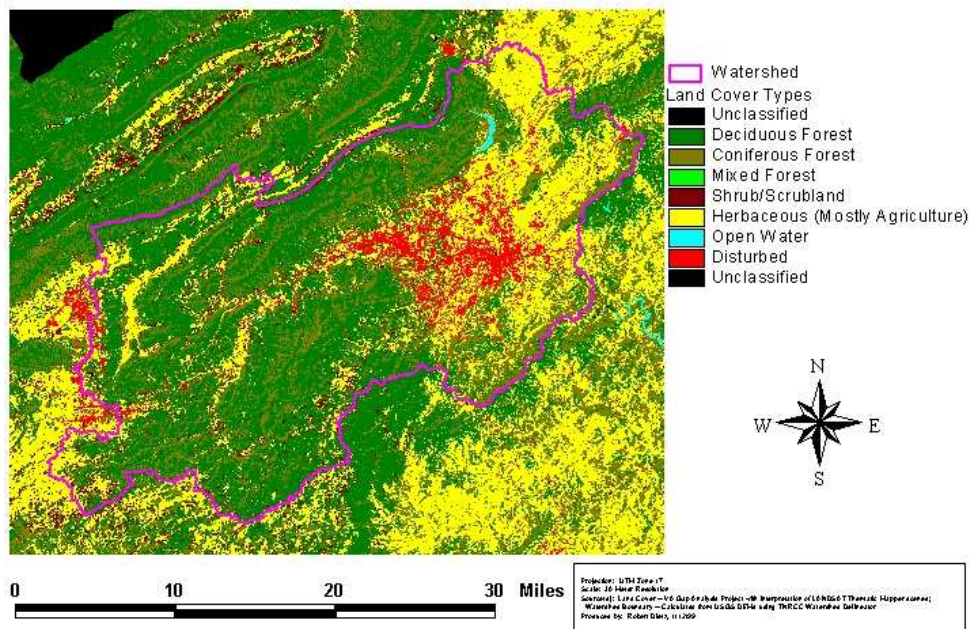


Figure 1: Landuse segmentation of the Upper Roanoke River Watershed in Southwest Virginia, USA.

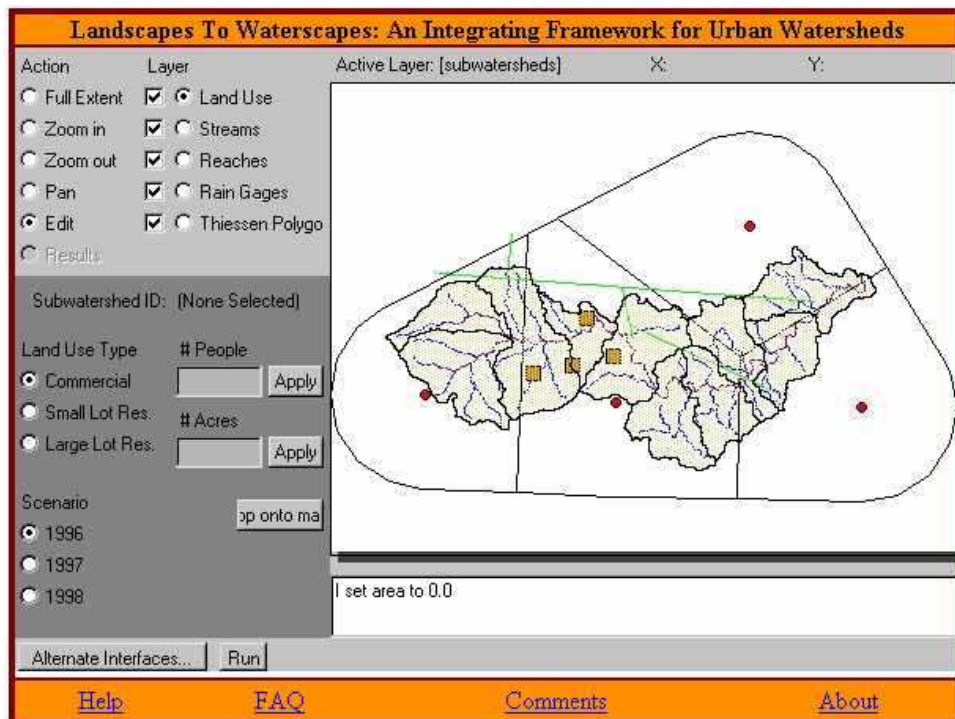


Figure 2: Front-End Decision Maker Interface to the L2W PSE.



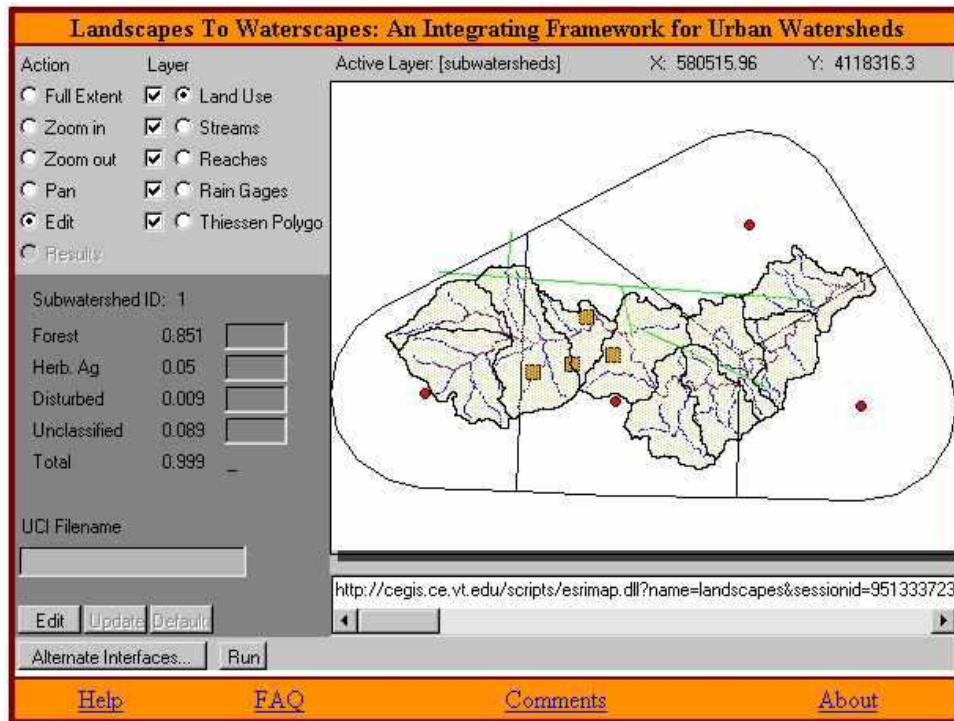


Figure 3: Front-End Hydrology Expert Interface to the L2W PSE.

### HSPF Model Parameters and Calibration

The HSPF model requires input data on rainfall, stream flow, evaporation, soil, and landuse information. Hourly records of rainfall data were obtained from the Blacksburg office of the National Weather Service. Flow data for Dundee stream gage on Back Creek was obtained from the USGS office in Richmond, VA. Potential evapotranspiration values were calculated on a monthly basis using the Thornthwaite method [72]. Physical watershed data were obtained from USGS 30-meter DEMs, USGS stream reach overlays, and Virginia Gap landuse data. Landuse data was classified into following categories: Forest, Herbaceous/Agriculture, Disturbed, Mixed, and impervious land. Reach cross-section data was collected in a field visit and from the Roanoke Valley Regional Stormwater Management Plan [19]. Based on the distribution of landuse and stream reaches, the watershed is divided into ten segments drained by ten stream reaches.

HSPF is a heavily parameterized model and uses both conceptual and physical parameters to represent hydrologic processes occurring within a watershed. Some physical parameters include land slope, overland flow plane length, Manning's roughness coefficient, infiltration rate of soil, and interception capacities of the vegetation. The conceptual parameters include storage capacities in the upper and lower zones of the soil, groundwater recession flow parameter, and evapotranspiration rates from various storages. The initial estimate of parameters was made based on published studies including the Upper James River study, conducted as a part of the EPA's Chesapeake Bay model [20]. In general, parameters associated with the upper soil zone varied with landuse, while the watershed slope varied among the ten physical land segments. Forest, herbaceous/agriculture, mixed, and disturbed lands were modeled as



PERLND segments while impervious land was represented as an IMPLND segment.

The model was calibrated for water years 1995, 1996, and 1997 using the USGS/EPA HSPEXP expert system shell. Calibration consisted of matching simulated and observed results for annual flow volume, high and low flow volumes, storm peaks, and seasonal volume differences. Parameter changes were made by varying the parameter by a fixed percentage for all landuses in all areas, while maintaining the relative differences in parameters between landuses. Calibration was considered complete when expert system advice did not improve model performance. The performance of the calibrated model was validated on water year 1998 and incorporated into the PSE. Results of simulation runs taken with PSE version of HSPF for examining various ‘what if’ scenarios were satisfactorily compared to the results of similar runs taken by running the model outside the PSE.

### Economic Model Calibration

A total of 1,844 transactions of vacant and nonvacant land parcels for the period of 1996 to 1997 were used to estimate bare land values, which equal the value of the parcel minus the value of structures on the land. The assessed values of structures located on parcels was deducted from the parcel transaction prices—a procedure used by Bockstael and Bell [10]. Estimation was performed using traditional linear least squares approximations. Further work is being done to evaluate alternative statistical procedures. The resulting estimated model is

$$\begin{aligned}
 \log(\textit{Price}) = & -17.87 \\
 & -0.53[\log(\textit{Size})] - 0.02[\log(\textit{Size})]^2 \\
 & +0.41[\log(\textit{Elevation})] - 0.13[\log(\textit{Elevation})]^2 \\
 & -0.05(\textit{Soil1}) - 0.10(\textit{Soil2}) \\
 & +0.0037(\textit{Population}) - 0.0005(\textit{Population})^2 \\
 & +1.60[\log(\textit{Mall})] - 0.25[\log(\textit{Mall})]^2 \\
 & +2.47\log[\log(\textit{City})] + 0.13(\textit{Developed}) \\
 & -0.07(\textit{Road}) + 0.05(\textit{Year}) \\
 & +4.09[\log(\textit{X})] + 3.72[\log(\textit{Y})] \\
 & -0.91[\log(\textit{X}) \log(\textit{Y})],
 \end{aligned} \tag{1}$$

where *Price* is the price of the parcel per square meter, *Size* is the area of the parcel in square meters, *Elevation* is the average elevation of the parcel in meters, *Soil1* and *Soil2* are dummy variables for soil permeability with *Soil1* being least permeable and *Soil2* intermediate in permeability, *Population* is the population density (persons/hectare) in the U.S. Census block containing the parcel, *Mall* is the minimum distance to an existing mall, *City* is the minimum distance to the closest city (Roanoke or Blacksburg depending on parcel location), *Developed* indicates whether the parcel is vacant or contains a commercial or a residential structure, *Road* reveals whether the parcel is adjacent to a major Road, the variable *Year* shows if the parcel was sold in 1996 or 1997, and the coordinates *X* and *Y* determine the exact location of the parcel [45].

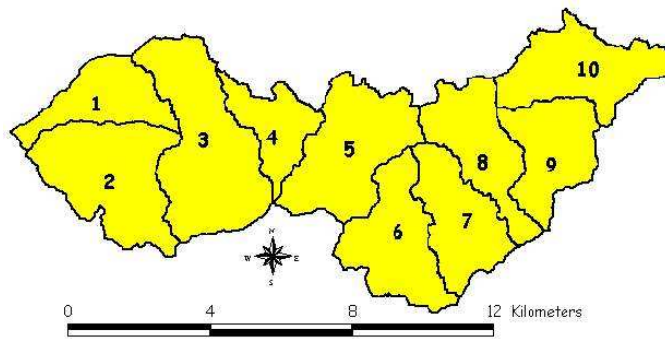


Figure 4: Land segments in the Back Creek subwatershed.

### Rationale for Tract Placements

The main rationale for selecting tract sites for the example runoff scenario is based on the determination of developability within the watershed. The concept of developability for a particular tract site is derived from a raster overlay of four spatial data layers—slope, landuse, preservation status, and flood plain location. In the overlay, the pixels in each of the four layers are reclassified with a value of either 0 or 1. The value assigned depends on whether the original value meets the criteria for developability. For example, pixels with average slopes of less than 20% are developable and are assigned a 0, while those over 20% are not developable and are assigned a 1. Each of the other layers is reclassified in a similar method (see Table 2). If any one of the four layers for a pixel is equal to one, then the pixel is not developable. Overall developability for a particular pixel, therefore, is achieved by summing the values for each of the four layers. If they sum to zero, then the pixel is developable; if the sum exceeds zero, then it is not developable. Within Back Creek subwatershed, land segments 3, 4, 5, and 10 (see Fig. 4) have significant portions of developable lands. These land segments, therefore, provide prime sites for adding new development tracts. The larger problem of misclassified and unlabeled data caused by out-of-date field measurements and lack of knowledge of precise commercial and vegetation boundaries is endemic to this domain; in the future, we plan to make use of machine learning techniques [11] to aid in automatic landuse segmentation. This is related to the broader task of map analysis using GIS data, a problem that has received much attention in areas such as identifying clusters of wild life behavior in forests [7], modeling population dynamics in ecosystems [1], and socioeconomic modeling [8].

### Interaction Scenario

The prototype allows the user to specify: (1) changes to the landsegments in terms of settlement patterns (for example, “add 1000 people in a settlement pattern equivalent to Preston Forest”) and (2) a choice of simulating several predetermined rainfall scenarios (‘dry summer,’ ‘wet summer,’ ‘fall with a hurricane’). The hydrologic simulation results include comparison of annual runoff (in inches), selected storm peaks with a baseline scenario, and can be viewed at subwatershed scale as also at the outlet of the watershed. Once this is complete, users will be able to analyze effects of various possible land settlement scenarios in a way that is meaningful to a city planner, economist, or a hydrologist. The L2W

<i>GIS Layer</i>	<i>Criteria</i>	<i>Value</i>
Slope	>20	1
	<20	0
Landuse	Distributed and Water	1
	Forest and Herb/Agr	0
Preservation Status	Preserved	1
	Unpreserved	0
Flood Plain Location	Inside Flood Plain	1
	Outside Flood Plain	0
Raster Overlay	Sum of Values	0 = Developable >0 = Undevelopable

Table 2: Method of Raster Overlay for Determining Developability.

prototype provides hydrographs (continuous record of streamflow at selected points) and relevant tabular statistics of annual runoff in inches, changes in storm peaks, and statistics of low flow. Figs. 2 and 3 present the input interfaces to our system and Fig. 5 identifies sample outputs obtained from an evaluation. Note that Fig. 5 provides comparisons between the effects of the alternative landscape scenario with a baseline case. In turn, these are useful in making biological impact assessments (on aquatic conditions), changes in flood risk, and land price changes.

### Interpretation of Hydrological Results from Example Scenario

The PSE produces average daily flow results for each of the ten land segments (see Fig. 5). The land segments run downstream from 1 to 10, with 10 being the outlet for Back Creek. Land segments 1 and 2 show no change in average daily flows as a result of the new tracts in the watershed. This result is intuitive because all of the tracts are downstream of these two land segments. The three tracts placed in land segment 3 are low density residential (few impervious surfaces) and, therefore, have very little impact on the hydrograph. Land segments 4 and 5 contain considerably more tracts with more impervious surfaces. This arrangement results in increased average daily flows and runoff. Increased flows and runoff continue to exist in land segments 6 through 9 as the effects from upstream segments are carried downstream. Results from land segment 10 also show increased flow and runoff, but the effects are not that pronounced, considering the new development tracts added to the land segment. Perhaps this lack of effect is attributable to the larger overall stream size and baseline flow.

### Interpretation of Results from Economic Model

The economic model outputs are shown in Table 3 for a scenario of developing 50 housing units using low, mid, and high density forms for development tracts. Total land area and land devoted to housing lots, infrastructure, and open space are shown in the table. Estimated bare land values are based on average lot sizes devoted to housing as shown in Eq. 1. Low density shows the largest total value because it results in the most land developed. Land areas developed and total land values decline with mid density standard, mid density cluster,

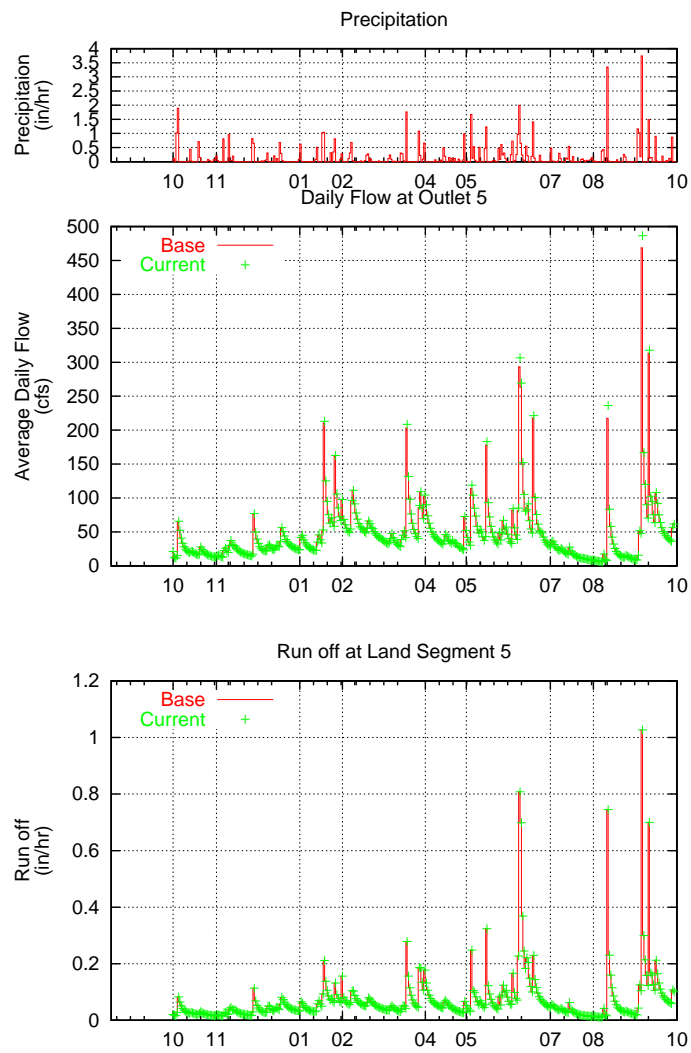


Figure 5: Graph output indicating runoff impact resulting from altering landuse values in Segment 5.

Development Tract Form	Low Density	Mid Density Standard	Mid Density Cluster	High Density
Development Landuses				
Land Reserved for Open Space (ha)	0.0	2.0	3.8	0.0
Land Occupied by Housing (ha)	55.8	5.6	4.1	4.0
Land Occupied by Infrastructure (ha)	4.9	0.9	0.6	0.9
Total Land (ha)	60.7	8.5	8.5	4.9
Total Number of Housing Units	50.0	50.0	50.0	50.0
Dollar Change Relative to Predevelopment Baseline				
Bare Land Value	\$2,256,647	\$1,118,137	\$1,005,880	\$1,001,845
Tract Development Cost	\$11,966,769	\$8,513,661	\$8,411,118	\$8,420,094
Total Assessed Value	\$13,296,223	\$9,210,933	\$9,098,675	\$9,098,194
Tax Revenue	\$150,247	\$104,084	\$102,815	\$102,810
Cost to Local Government	\$0	\$378,985	\$378,985	\$378,985
Annualized Cost to Localities	\$0	\$30,546	\$30,546	\$30,546

Table 3: Estimated Tax Revenues and Fiscal Costs by Development Tract Form.

and high density, which have smaller lot sizes. Total development costs are also highest with low density, which has the largest total area to cover and the most expensive type of housing. Total tract value is also highest with low density and lowest with mid density cluster development.

## 5 Concluding Remarks

The long-term goal of our project is to provide a holistic approach to watershed management by an integrated assessment of the alternative landscape scenarios that occur during the urbanization/suburbanization process. On the PSE front, we plan to explore various additional aspects, as outlined in Table. 1. The operational strength of watershed management PSEs will increasingly rely on an integration of methodologies for storage, retrieval, and postprocessing of scenarios and experiments. The importance of support for such data intensive operations is increasingly underscored in scientific circles [15, 52, 53, 64]. One of the emerging areas in database research is to provide native support for domain specific analyses. This is the approach taken by the multi year, multi institution Sequoia earth science project [71]. In the L2W context, we plan to extend this methodology to provide storage for scenario populations in a structured way, and enable management of the execution environment (e.g., HSPF) by keeping track of constraints implied by the physical characteristics of the application. This will be achieved by a one-to-one correspondence between the entities in the scenario description to, say, tables in a relational database system (RDBMS). In addition, scenario evaluation can be efficiently formulated as query answering. For example, the SQL query

```
SELECT RunOff(*)
FROM Roanoke
WHERE slope < 12 AND landuse = 'Preston Forest';
```

can be used to evaluate the runoff arising in subwatersheds that satisfy the desired conditions. Powerful query optimization algorithms have been developed [16, 38] that selectively ‘push’

costly GIS operations deeper into the computational pipeline. In addition, useful conceptual abstractions for reasoning about the watershed domain and supporting the problem solving process need to be developed. The ZOO desktop experiment management system [43] has taken the first steps towards this goal by providing a compositional modeling environment for data collection, pre-processing, and management of experiments. However, ZOO lacks decision support capabilities and will require fairly detailed domain modeling before application to watershed management. The connections to GIS based services also need to be strengthened in PSE design methodology. Wildlife and fisheries biologists were involved in the L2W project, but their data and models were not completed as of this writing. The intent of L2W is to integrate hydrologic, economic, and biological models. Finally, we intend to explore the incorporation of collaboration support, optimization, and recommender systems (for selecting among various choices of simulation models) within the L2W framework.

## References

- [1] C.A. Abbott, M.W. Berry, J. Comiskey, L.J. Gross, and H.-K. Luh. Parallel Individual-Based Modeling of Everglades Deer Ecology. *IEEE Computational Science and Engineering*, Vol. 4(4), October-December 1997.
- [2] R. Agrawal, T. Imielinski, and A. Swami. Mining Associations between Sets of Items in Large Databases. In *Proceedings of the ACM SIGMOD International Conference on Management of Data*, pages 207–216. ACM Press, May 1993.
- [3] D.P. Anderson et al. SETI@home: The Search for Extraterrestrial Intelligence. Technical report, Space Sciences Laboratory, University of California at Berkeley, 1999. URL: <http://setiathome.ssl.berkeley.edu/>.
- [4] J. Andrew, J. Capilla, and E. Sanchis. AQUATOOL, A Generalized Decision-Support System for Water-Resources Planning and Operational Management. *Journal of Hydrology*, Vol. 177:pp. 269–291, 1996.
- [5] R. Arendt. *Designing Open Space Subdivisions: A Practical Step-by-Step Approach*. Natural Lands Trust, Media, PA., 1994. 96 pages.
- [6] S. Balay, W.D. Gropp, L.C. McInnes, and B.F. Smith. Efficient Management of Parallelism in Object-Oriented Numerical Software Libraries. In E. Arge, A.M. Bruaset, and H.P. Langtangen, editors, *Modern Software Tools in Scientific Computing*. Birkhauser Press, 1997.
- [7] M.W. Berry, J. Comiskey, and K. Minser. Parallel Analysis of Clusters in Landscape Ecology. *IEEE Computational Science and Engineering*, Vol. 1(2):pp. 24–38, Summer 1994.
- [8] M.W. Berry, R.O. Flamm, B.C. Hazen, and R.L. MacIntyre. The Land-Use Change Analysis System (LUCAS) for Evaluating Landscape Management Decisions. *IEEE Computational Science and Engineering*, Vol. 3(1):pp. 24–25, 1996.
- [9] B.R. Bicknell, J.C. Imhoff, J.L. Kittle, A.S. Donigian Jr., and R.C. Johnson. Hydrological Simulation Program - FORTRAN (HSPF). User’s Manual for Version 11.0. Technical

- report, National Exposure Research Laboratory, Research Triangle Park, US EPA, NC 27711, USA, August 1997.
- [10] N.E. Bockstael and K. Bell. *Land Use Patterns and Water Quality: The Effect of Differential Land Management Controls*. Kluwer Academic Publishers, Boston, 1998.
  - [11] C.E. Brodley and M.A. Friedl. Identifying Mislabeled Training Data. *Journal of Artificial Intelligence Research*, Vol. 11:pp. 131–167, 1999.
  - [12] S. Burgee, A.A. Giunta, V. Balabanov, B. Grossman, W.H. Mason, R. Narducci, R.T. Haftka, and L.T. Watson. A Coarse Grained Parallel Variable-Complexity Multidisciplinary Optimization Paradigm. *Internat. J. Supercomputer Appl. High Performance Comput.*, Vol. 10:pp. 269–299, 1996.
  - [13] S. Carpenter, W. Brock, and P. Hanson. Ecological and Social Dynamics in Simple Models of Ecosystem Management. *Conservation Ecology*, Vol. 3(2), 1999.
  - [14] H. Casanova and J. Dongarra. NetSolve: A Network Server for Solving Computational Science Problems. *Int. J. Supercomp. Appl. High Perf. Comput.*, Vol. 11(3):pp. 212–223, 1997.
  - [15] K.M. Chandy, R. Bramley, B.W. Char, and J.V.W. Reynders. Report of the NSF Workshop on Problem Solving Environments and Scientific IDEs for Knowledge, Information and Computing (SIDEKIC’98). Technical report, Los Alamos National Laboratory, 1998.
  - [16] S. Chaudhuri and K. Shim. Optimization of Queries with User-Defined Predicates. *ACM Transactions on Database Systems*, Vol. 24(2):pp. 177–228, June 1999.
  - [17] C.W. Chen, J. Herr, L. Ziemelis, R.A. Goldstein, and L. Olmsted. Decision Support System for Total Maximum Daily Load. *Journal of Environmental Engineering*, Vol. 125(7):pp. 653–659, 1999.
  - [18] N.H. Crawford and R.K. Linsley. Digital Simulation in Hydrology: Stanford Watershed Model IV. Technical Report 39, Department of Civil Engineering, Stanford University, July 1966.
  - [19] Dewberry and Davis. Roanoke Valley Regional Stormwater Management Plan, Study Report. Fifth Planning District Commission, Roanoke, VA, December 1996.
  - [20] A.S. Donigian Jr., B.R. Bicknell, and J.L. Kittle Jr. Conversion of the Chesapeake Bay Basin Model to HSPF Operation. Prepared by AQUA TERRA Consultants for the Computer Sciences Corporation, Annapolis, MD and U.S. EPA Chesapeake Bay Program, Annapolis, MD, 1986.
  - [21] A.S. Donigian Jr., J.C. Imhoff, and J.L. Kittle Jr. HSPFParm, An Interactive Database of HSPF Model Parameters Version 1.0. AQUA TERRA Consultants, CA 94043, 1999.
  - [22] T.T. Drashansky, E.N. Houstis, N. Ramakrishnan, and J. R. Rice. Networked Agents for Scientific Computing. *Communications of the ACM*, Vol. 42(3):pp. 48–54, March 1999.

- [23] ESRI. MapObjects Internet Map Server User Guide. Technical report, Environmental Systems Research Institute, 1998. URL: <http://www.esri.com/software/mapobjects>.
- [24] K. Fedra. GIS and Environmental Modeling. In M. Goodchild, B. Parks, and L. Steyaert, editors, *Environmental Modeling with GIS*, pages 35–50. Oxford University Press, 1993.
- [25] K. Fedra and D.G. Jamieson. The Waterware Decision Support System for River-Basin Planning: 3. Example Applications. *Journal of Hydrology*, Vol. 177:pp. 199–211, 1996.
- [26] S.J. Fortune, D.M. Gay, B.W. Kernighan, O. Landron, R.A. Valenzuela, and M.H. Wright. WISE Design of Indoor Wireless Systems: Practical Computation and Optimization. *IEEE Computational Science and Engineering*, Vol. 2(1), Spring 1995.
- [27] I. Foster and C. Kesselman. Globus: A Metacomputing Infrastructure Toolkit. *Int J. Supercomput. Appl.*, Vol. 11(2):pp. 115–128, 1997.
- [28] I. Foster and C. Kesselman. *The Grid: Blueprint for a New Computing Infrastructure*. Morgan Kaufmann Publishers, July 1998.
- [29] E. Gallopoulos, E.N. Houstis, and J.R. Rice. Computer as Thinker/Doer: Problem-Solving Environments for Computational Science. *IEEE Computational Science and Engineering*, Vol. 1(2):pp. 11–23, 1994.
- [30] D. Gannon, B. Bramley, T. Stuckey, J. Villacis, J. Balasubramanian, E. Akman, F. Breg, S. Diwan, and M. Govindaraju. Component Architectures for Distributed Scientific Problem Solving. *IEEE Computational Science and Engineering*, Vol. 5(2):pp. 50–63, May/June 1998.
- [31] A.A. Giunta, V. Balabanov, D. Haim, B. Grossman, W.H. Mason, L.T. Watson, and R.T. Haftka. Multidisciplinary Optimization of a Supersonic Transport using Design of Experiments Theory and Response Surface Modeling. *Aero J.*, Vol. 101:pp. 347–356, 1997.
- [32] A. Goel, C. Baker, C.A. Shaffer, B. Grossman, R.T. Haftka, W.H. Mason, and L.T. Watson. VizCraft: A Problem Solving Environment for Configuration Design of a High Speed Civil Transport. *Computing in Science and Engineering*, 2000. to appear.
- [33] A. Goel, C. Phanouriou, F. Kamke, C.J. Ribbens, C.A. Shaffer, and L.T. Watson. WBCSim: A Prototype Problem Solving Environment for Wood-Based Composites Simulations. *Engineering with Computers*, Vol. 15(2):pp. 198–210, 1999.
- [34] M.F. Goodchild. The State of GIS for Environmental Problem-Solving. In M. Goodchild, B. Parks, and L. Steyaert, editors, *Environmental Modeling with GIS*, pages 8–15. Oxford University Press, 1993.
- [35] A.S. Grimshaw, A. Ferrari, G. Lindahl, and K. Holcomb. MetaSystems. *Communications of the ACM*, Vol. 41(11):pp. 46–55, November 1998.
- [36] A.S. Grimshaw, J.B. Weismann, E.A. West, and Ed. C. Loyot Jr. MetaSystems: An Approach Combining Parallel Processing and Heterogeneous Distributed Computing Systems. *Journal of Parallel and Distributed Computing*, Vol. 21(3), June 1994.



- [37] W.D. Gropp and B.F. Smith. Scalable, Extensible, and Portable Numerical Libraries. In *Proc. Scalable Parallel Libraries Conference*, pages 87–93. IEEE Press, Los Alamitos, CA, 1994.
- [38] J.M. Hellerstein. Optimization Techniques for Queries with Expensive Methods. *ACM Transactions on Database Systems*, Vol. 23(2):pp. 113–157, September 1998.
- [39] E.N. Houstis, J.R. Rice, S. Weerawarana, A.C. Catlin, P. Papchiou, K.Y. Wang, and M. Gaitatzes. Parallel ELLPACK: A Problem Solving Environment for PDE Based Applications on Multicomputer Platforms. *ACM Transactions on Mathematical Software*, Vol. 24(1):pp. 30–73, March 1998.
- [40] E.N. Houstis, V.S. Verykios, A.C. Catlin, N. Ramakrishnan, and J.R. Rice. PYTHIA II: A Knowledge/Database System for Recommending/Testing Scientific Software. *ACM Transactions on Mathematical Software*, Vol. 26(2), June 2000.
- [41] R.S. Means Company Inc. Residential Cost Data 1999. Kingston, MA, 1999.
- [42] R.S. Means Company Inc. Site Work and Landscape Cost Data 1999: 18th Annual Edition. Kingston, MA, 1999.
- [43] Y. Ioannidis, M. Livny, S. Gupta, and N. Ponnkanti. ZOO: A Desktop Experiment Management Environment. In *Proc. 22nd International VLDB Conference*, pages 274–285, 1996.
- [44] D.R. Jones, C.D. Perttunen, and B.E. Stuckman. Lipschitzian Optimization without the Lipschitz Constant. *Journal of Optimization Theory and Application*, Vol. 79(1):pp. 157–181, 1993.
- [45] I.K. Katsas and D.J. Bosch. Land Value Modeling in Roanoke County. Unpublished Manuscript, Department of Agricultural and Applied Economics, Virginia Tech, Blacksburg, VA, April 2000.
- [46] J.L. Kittle Jr., A.M. Lumb, P.R. Hummel, P.B. Duda, and M.H. Gray. A Tool for the Generation and Analysis of Model Simulation Scenarios for Watersheds (GenScn). Technical Report 98-4134, U.S. Geological Survey Water-Resources Investigations, 1998. 152 pages.
- [47] R.G. Knox, V.L. Kalb, E.R. Levine, and D.J. Kendig. A Problem-Solving Workbench for Interactive Simulation of Ecosystems. *IEEE Computational Science and Engineering*, Vol. 4(3):pp. 52–60, 1997.
- [48] H. Lal, C. Fonyo, B. Negahban, J.W. Jones, W.B. Boggess, G.A. Kiker, and K.L. Campbell. Lake Okeechobee Agricultural Decision Support System (LOADSS). ASAE Paper No. 91-2623, American Society of Agricultural Engineers, St. Joseph, Michigan, 1991.
- [49] R.M. Lewis, V. Torczon, and M.W. Trosset. Direct Search Methods: Then and Now. *J. Computational and Applied Mathematics*, 2000. to appear.

- [50] D.R. Maidment. GIS and Hydrological Modeling. In M. Goodchild, B. Parks, and L. Steyaert, editors, *Environmental Modeling with GIS*, pages 147–167. Oxford University Press, 1993.
- [51] S. Markus, S. Weerawarana, E.N. Houstis, and J.R. Rice. Scientific Computing via the Web: The Net Pellpack PSE Server. *IEEE Computational Science and Engineering*, Vol. 4(3):pp. 43–51, 1997.
- [52] R.W. Moore, C. Baru, R. Marciano, A. Rajasekar, and M. Wan. Data-Intensive Computing. In C. Kesselman and I. Foster, editors, *The Grid: Blueprint for a New Computing Infrastructure*. Morgan Kaufmann, 1998.
- [53] R.W. Moore, T.A. Prince, and M. Ellisman. Data-Intensive Computing and Digital Libraries. *Communications of the ACM*, Vol. 41(11):pp. 56–62, November 1998.
- [54] Negahban, B. and Moss, C.B. and Jones, J.W. and Zhang, J. and Boggess, W.D. and Campbell, K.L. Optimal Field Measurement for Regional Water Quality Planning. ASAE Paper No. 94-353, American Society of Agricultural Engineers, St. Joseph, Michigan, 1994.
- [55] D.L. Osmond, R.W. Gannon, J.A. Gale, D.E. Line, C.B. Knott, K.A. Phillips, M.H. Turner, M.A. Foster, D.E. Lehning, S.W. Coffey, and J. Spooner. WATERSHEDSS: A Decision Support System for Watershed Scale NonPoint Source Water Quality Problems. *Journal of the American Water Resources Association*, Vol. 33(2):pp. 327–341, 1997.
- [56] S.G. Parker, C.R. Johnson, and D. Beazley. Computational Steering Software Systems and Strategies. *IEEE Computational Science and Engineering*, pages 50–59, October–December 1997.
- [57] J.R. Philip. The Theory of Infiltration. *Soil Science*, Vol. 84:pp. 257–264, 1957.
- [58] J. Rakowska, R.T. Haftka, and L.T. Watson. Multi-Objective Control-Structure Optimization Via Homotopy Methods. *SIAM Journal of Optimization*, Vol. 3:pp. 654–667, 1993.
- [59] N. Ramakrishnan and A.Y. Grama. Data Mining: From Serendipity to Science (Guest Editors’ Introduction to the Special Issue on Data Mining). *IEEE Computer*, Vol. 32(8):pp. 34–37, August 1999.
- [60] N. Ramakrishnan and A.Y. Grama. Mining Scientific Data. *Advances in Computers*, Vol. 54, 2001. to appear.
- [61] N. Ramakrishnan, E.N. Houstis, and J.R. Rice. Recommender Systems for Problem Solving Environments. In H. Kautz, editor, *Technical Report WS-98-08 (Working Notes of the AAAI-98 Workshop on Recommender Systems)*, pages 91–95. AAAI/MIT Press, 1998.
- [62] N. Ramakrishnan and C.J. Ribbens. Mining and Visualizing Recommendation Spaces for Elliptic PDEs with Continuous Attributes. *ACM Transactions on Mathematical Software*, Vol. 26(2), June 2000.

- [63] J.R. Rice and R.F. Boisvert. *Solving Elliptic Problems Using ELLPACK*. Springer Verlag, New York, 1985.
- [64] J.R. Rice and R.F. Boisvert. From Scientific Software Libraries to Problem-Solving Environments. *IEEE Computational Science & Engineering*, Vol. 3(3):pp. 44–53, Fall 1996.
- [65] J.F. Rodríguez, J.E. Renaud, and L.T. Watson. Convergence of Trust Region Augmented Lagrangian Methods using Variable Fidelity Approximation Data. *Structural Optimization*, Vol. 15:pp. 141–156, 1998.
- [66] J.F. Rodríguez, J.E. Renaud, and L.T. Watson. Trust Region Augmented Lagrangian Methods for Sequential Response Surface Approximation and Optimization. *ASME J. Mech. Design*, Vol. 120:pp. 58–66, 1998.
- [67] T. Schuler et al. The Benefits of Better Site Design in Residential Subdivisions. *Watershed Protection Techniques*, Vol. 3(2):pp. 633–646, 2000.
- [68] M. Shapiro et al. GRASS Version 4.1 Programmer’s Manual. Technical report, U.S. Army Corp. of Engineers’ Construction Engineering Research Laboratory, Champaign, IL, March 1994.
- [69] C. Speir. Two Cost Analyses in Resource Economics: The Public Service Costs of Alternative Land Settlement Patterns and Effluent Allowance Trading in Long Island Sound. Unpublished M.S. Thesis, Virginia Tech, Blacksburg, VA, 2000.
- [70] K. Stephenson. Proposed Development Tracts for Development Scenarios. Unpublished Manuscript, Department of Agricultural and Applied Economics, Virginia Tech, Blacksburg, VA, 2000.
- [71] M. Stonebraker. Sequoia 2000: A Reflection on the First Three Years. *IEEE Computational Science and Engineering*, pages 63–72, Winter 1994.
- [72] C.W. Thornthwaite. An Approach Toward a Rational Classification of Climate. *Geograph. Rev.*, Vol. 38:pp. 55–94, 1948.
- [73] USEPA. Better Assessment Science Integrating Point and Nonpoint Sources - Users Manual, Version 1.0. Technical Report EPA-823-R-96-001, Environmental Protection Agency, District Court, Washington, DC, 1996.